

# **OJJDP & CJDC**

## **Tribal Mapping Project**



**This project provides various tribal demographic information, tribal court contacts, and other available juvenile justice resources for the Navajo Nation, the Southern Ute Tribe, the Ute Mountain Ute Tribe, and the nineteen New Mexico pueblos within the OJJDP Southwest Region of Arizona, Colorado, New Mexico, Oklahoma, Texas, and Utah.**

*OJJDP provides funding for this project but does not sanction the content of these materials.*



# NAVAJO NATION

The Navajo (Nav-uh-hoh) Nation is by far the country's largest Native American tribe. Moreover, Navajo Nation also has the largest tribal reservation, with the land area of 27,413 square miles. The reservation itself encompasses three states: Arizona, New Mexico, and Utah. The majority of the Navajo Nation reservation is located within Arizona.



## DEMOGRAPHICS

Based on the 2010 census data, there was approximately 173,667 residents living within the Navajo Nation. Specifically, 104,565 of Navajo Nation residents were located in the geographical boundaries of Arizona, while 69,524 were within western New Mexico, and last, 6,373 residents resided in southern Utah.

Notably, the Navajo Nation has a very high youth population. Navajo Nation youth account for one-third (33%) of all tribal members. In terms of race and ethnicity, the majority of the Navajo Nation tribal members identify themselves as American Indian or Alaska Native alone (96%), while the remaining four percent are split between white alone (2%), and multi-race persons (2%).

In 2010, there were 49,946 households within the Navajo Nation, with an average household size of 3.5 persons and an average family size of 4.1 persons. Notably, the average household size of the Navajo Nation (3.4 persons) is larger than the state of Arizona (2.6 persons) as is the average family size for tribal members (4.1 persons) compared to the state of Arizona (3.2 persons). The household size data for Navajo Nation is similar across all three states. The median household income for the Navajo Nation is \$27,389, which is approximately half that of the state of Arizona (\$51,310) overall. One-third (32%) of all households on the Navajo Nation have incomes that are less than \$15,000 when compared to the state of Arizona (17%).

More information on 2010 Navajo Nation demographic information can be found through this [link](#).

## DETENTION CENTERS<sup>1</sup>

There are ten total detention centers within the Navajo Nation located in the towns of Chinle, Kayenta, Tuba City, Crownpoint, Window Rock, Tohatchi, Shiprock, and Ramah. There are three juvenile facilities.

<b>Facility Name</b>	<b>Adult or Juvenile</b>	<b>State</b>	<b>Number of Beds</b>
Navajo DOC Chinle	Adult	Arizona	48
Navajo DOC - Kayenta PD & Holding Facility	Adult	Arizona	10
Navajo DOC - Tuba City	Adult	Arizona	138
Western Navajo Juvenile Correction Center	Juvenile	Arizona	36
Navajo DOC - Window Rock	Adult	Arizona	42
Navajo Nation - Tohatchi Youth Detention	Juvenile	New Mexico	13
Navajo DOC - Crownpoint	Adult	New Mexico	48

<sup>1</sup> Todd D. Minton, Bureau of Indian Affairs, *Jails in Indian County, 2014* (NCJ 248974), 10-11 (Oct. 2015), available at <http://www.bjs.gov/content/pub/pdf/jic14.pdf> (last visited Jul. 11, 2016) (hereinafter *Jails in Indian County*).

Navajo DOC - Crownpoint Juvenile	Juvenile	New Mexico	14
Navajo DOC - Shiprock PD & Adult Detention	Adult	New Mexico	18
Ramah Navajo PD & Detention Center	Adult	New Mexico	10

## JUDICIAL SYSTEM

Given its vast size, Navajo Nation has eleven judicial districts within its reservation’s boundaries for its two-level court system. These districts are located in the communities of: Alamo/To'hajilee, Aneth, Chinle, Crownpoint, Dilkon, Dzil Yijiin, Kayenta, Ramah, Shiprock, Tuba City, and Window Rock. According to Harvard Law School, "the judicial system of the Navajo Nation is the most active tribal judicial system in the United States, with a case load that rivals, and in some instances exceeds, many municipal, county, and state judicial systems."<sup>2</sup> Each district has a district court judge, a staff attorney, a court administrator, and a traditional program specialist, who also acts as a Peacemaker.

Notably, within the Navajo Aneth district, there is the Aneth Community Court Project, which is a holistic, restorative justice program for offenders, which started in 2012.<sup>3</sup> This community court is modeled after the Red Hook Community Justice Center in New York which actually uses traditional Native American practices to resolve disputes.

The Aneth Community Court Project is not the only restorative justice model within the Navajo Nation. The Navajo Nation also has a Peacemaking Program, which is an extrajudicial model of community-based system of cultural education and dispute resolution, which is also supported by the Navajo Judicial Branch. This program was created bac in 1982 and was originally called the Navajo Peacemaking Court, however in 2000, the word “court” was removed from the program’s name. Navajo Peacemakers act as mediators and help pull in Diné wisdom and customs into this process. Periodically, Navajo judges will ask Peacemakers to make a sentencing recommendation and obtain a participant consensus regarding *nályééh*, a traditional Navajo value through which harmony is achieved for a particular case.



*The Peacemaking Meeting Room in the Dilkon Judicial District*

In 2011, the Navajo Nation Council passed the *Álchíní Bi Beehaz'áannii Act*. This act, which amended the Navajo Nation’s Children’s Code, provides for traditional Navajo dispute resolution within dependency, diversion, and alternative sentencing peacemaking services for Navajo juveniles. Moreover, the Act “allows professionals and families to refer matters concerning children to peacemaking for a tradition-based resolution without need for a court order.”<sup>4</sup> Since its passage, the Act, which is also known as ABBA, “allows agencies, professionals and family to refer matters concerning children to peacemaking for a tradition-based resolution

<sup>2</sup> *Navajo Nation Supreme Court to hear case at Harvard Law School*, HARVARD LAW TODAY, (Apr. 11 2006), <http://today.law.harvard.edu/navajo-nation-supreme-court-to-hear-case-at-harvard-law-school/>.

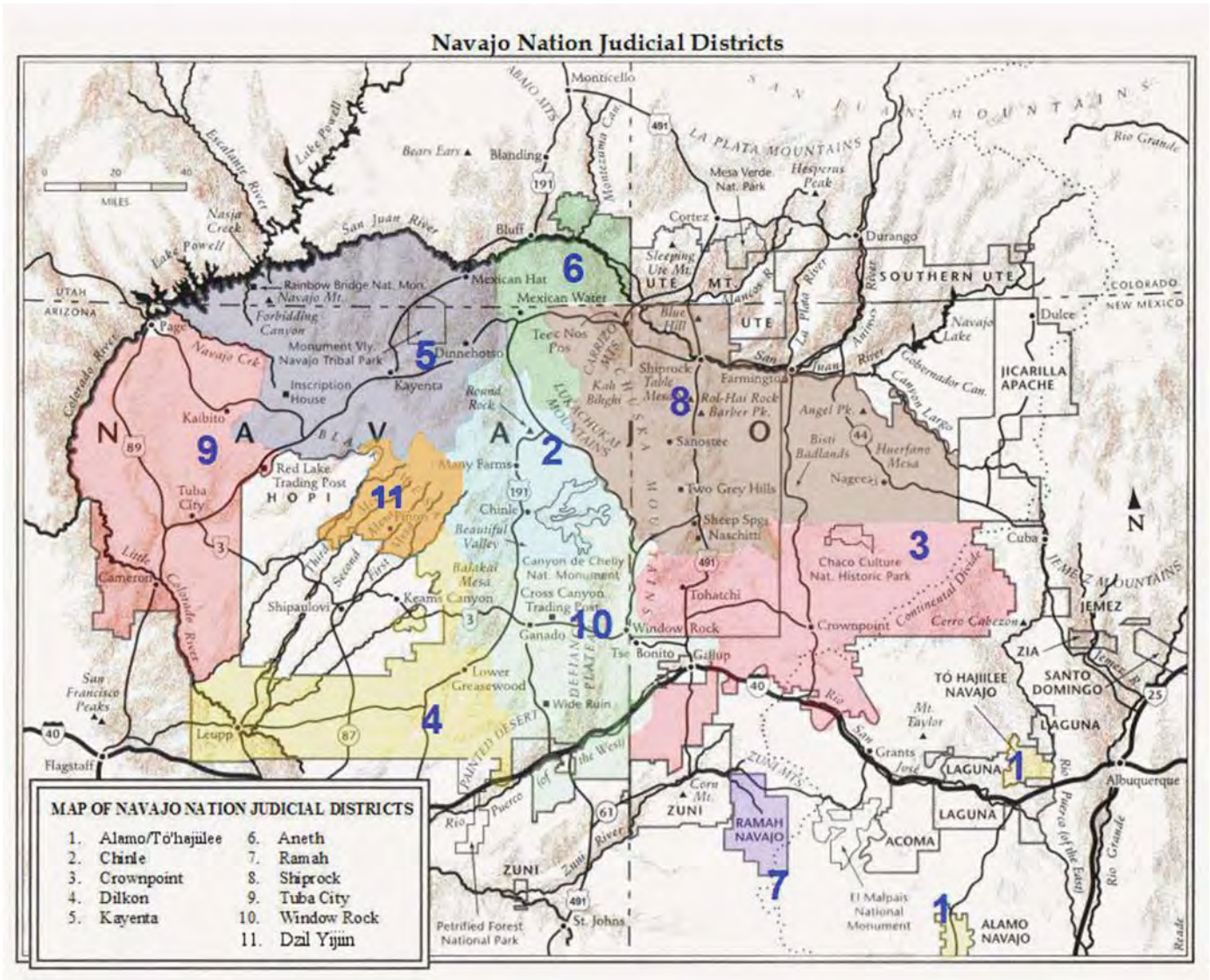
<sup>3</sup> *Problem-Solving Justice in Indian Country: The Navajo Nation Plans a Pilot Community Court*, Center for Court Innovation, <http://www.courtinnovation.org/research/podcast-problem-solving-justice-indian-country-navajo-nation-plans-pilot-community-court> (last visited Jul. 5, 2016).

<sup>4</sup> Heidi J. Todacheene, *She Saves Us From Monsters: The Navajo Creation Story and Modern Tribal Justice*, 15 Tribal L.J. 30, 52 n.158 (2015) available at [http://lawschool.unm.edu/tlj/volumes/vol15/TLJ\\_15-2\\_Todacheene.pdf](http://lawschool.unm.edu/tlj/volumes/vol15/TLJ_15-2_Todacheene.pdf).



without need for court orders as a method for diversion, self- and family-accountability and for preserving or reunifying a family.”<sup>5</sup>

### Map of Navajo Nation Judicial Districts



<sup>5</sup> Institutional History Of *Hózhóji Naat'ah*, Navajo Nation Courts, [http://www.navajocourts.org/Peacemaking/Plan/in\\_sthistory.html](http://www.navajocourts.org/Peacemaking/Plan/in_sthistory.html) (last visited July 7, 2016).

Navajo Nation Contact Information

Dist.1 CHINLE DISTRICT

P. O. Box 547, Chinle, AZ 86503  
Tel: (928) 674-2070, 2071, 2084

Dist. 2 CROWNPOINT DISTRICT

P. O. Box 6, Crownpoint, NM 87313  
Tel: (505) 786-2072

Dist. 3 KAYENTA DISTRICT

P. O. Box 2700, Kayenta, AZ 86033  
Tel: (928) 697-5549, 5550

Dist. 4 RAMAH DISTRICT

P. O. Box 309, Ramah, NM 87321  
Tel: (505) 775-3218

Dist. 5 SHIPROCK DISTRICT

P. O. Box 1168, Shiprock, NM 87420  
Tel: (505) 368-1270, 1287

Dist. 6 TUBA CITY DISTRICT

P. O. Box 725, Tuba City, AZ 86045  
Tel: (928) 283--3140

Dist. 7 WINDOW ROCK DISTRICT

P. O. Box 5520, Window Rock, AZ 86515  
Tel: (928) 871-6626

Dist. 8 ALAMO/TÓ'HAJIILEE DISTRICT

ALAMO COURT

P. O. Box 5458, Alamo, NM 87825  
Tel: (575) 854-2668, 2669

TÓ'HAJIILEE COURT

P. O. Box 3101-A, Tó'hajiilee, NM 87026  
Tel: (505) 908-2817, 2818

Dist. 9 DILKON DISTRICT

HC 63 Box 787, Winslow, AZ 86047  
Tel: (928) 657-8140

Dist. 10 ANETH DISTRICT

P. O. Box 320, Montezuma Creek, UT 84534  
Tel: (435) 651-3545  
Email: anethcourt@navajo-nsn.gov

Dist. 11 DZİŁ YIJIIN DISTRICT

P. O. Box 129, Piñon, AZ 86510  
Tel: (928) 725-3781

Navajo Nation Youth Detention

Chinle, AZ 86503  
Tel: (928) 674-2230

Navajo Juvenile Detention

Tel: (928)-674-2230

Navajo Child Specialty Advocacy Project

Tel: (928)-871-6342

Navajo Office of the Chief Justice

Tel: (928)-871-7669

Navajo Criminal Justice Planning Committee

Office of the Chief Prosecutor

P.O. Box 3779  
Window Rock, AZ 86515  
Tel: 520-871-6622

Kathleen Bowman – Public Defender

P.O. Box 3210  
Window Rock, AZ 86515  
Tel: (928) 871-6370/6374

Navajo Nation Bar Association

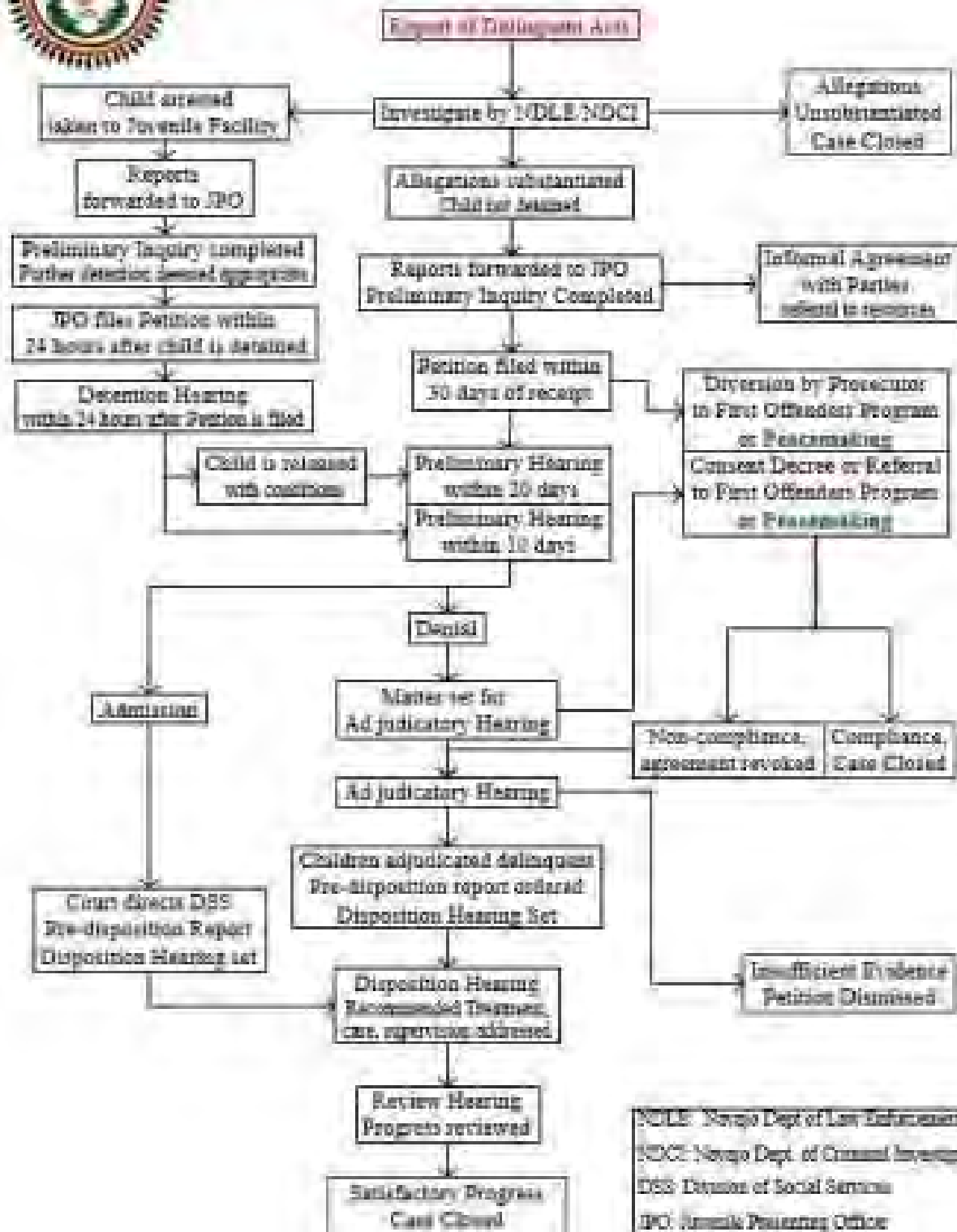
P.O. Box 690  
Window Rock, AZ 86515  
Tel: (928) 871-2211  
Email: nmba@navajolaw.org

Tohatchi Youth Detention (NM)

Western Navajo Juvenile Correction Center (AZ)  
Tel: (928) 871-7555



## Navajo Nation Juvenile Justice System: Delinquents



*TYPICAL PROGRESSION OF A NAVAJO JUVENILE COURT CASE*



# SOUTHERN UTE

---

The Southern Ute [yOOt] Indian Tribe is located southeast of the Durango in Colorado. The tribal reservation is a checkerboard reservation, which means that there are tribal member allotments and tribally-owned land dating back into the early 1800s. Within the reservation, the Southern Ute Tribe has 307,838 tribally-owned acres. The Tribe has 1,408 enrolled members who reside both within the reservation, as well as off the reservation. The Southern Ute Tribal Administration is located in the community of Ignacio, Colorado. The Tribe has a seven-member council including the Chairman.

Within The Southern Ute Indian Tribal Code, a Children’s Code is included, with particularized juvenile offenses and also includes provisions such as: pre-adjudication examinations of disabled children; deferred adjudications; and medical, psychological, and substance abuse assessments.<sup>6</sup> Moreover, the Southern Ute Children’s Code establishes a Children’s Court system on the reservation.<sup>7</sup> Additionally, within the Tribe’s probation services division, there is a juvenile probation program. The Tribe also operates the Southern Ute Adult Detention Center, which is classified as an adult tribal jail.<sup>8</sup> The capacity for this adult jail is fifty-seven beds.<sup>9</sup>

Notably, the Southern Ute Tribe has a wellness court for its tribal adult and juvenile members called the tüüÇai Court. This court provides multi-agency community-based services and specialized treatment to Southern Ute juveniles. The tüüÇai Court Core Team, who is responsible for supporting the juvenile’s Individual Wellness Plans include representatives from the following tribal groups and organizations:

- Elder Representative
- Tribal Prosecutor
- Tribal Public Defender
- Southern Ute Police Department
- tüüÇai Case Manager
- Community Representative
- Tribal Court Judge
- Substance Abuse Counselor

## Southern Ute Contact Information

Tribal Chairman and Tribal Council  
P.O. Box 737/356 Ouray Drive  
Ignacio, CO 81137  
(970) 563-0100

Southern Ute tüüÇai Court (Wellness Court)  
tüüÇai Court Case Manager  
Stefanie Wyatt  
(970) 563-0240

Southern Ute Indian Tribe  
P.O. Box 737, #18, 149 CR 517  
Ignacio, CO 81137  
Phone: (970) 563-0240

Southern Ute Public Defender  
Tim Heydinger  
(970) 563-0100 x 3100

Southern Ute Tribal Prosecutor  
Ben Lammons  
(970) 563-0100 x 310

---

<sup>6</sup> See generally SOUTHERN UTE TRIBALCODE tit.6. (1989).

<sup>7</sup> *Id.* at § 6-5-101.

<sup>8</sup> *Jails in Indian County, supra* note 1 at 10.

<sup>9</sup> *Id.*

2010 Demographic Profile of the Southern Ute Reservation (Ignacio, CO)<sup>10</sup>

<b><u>Southern Ute Reservation Population</u></b>	
Total Population	12,153

**Southern Ute Reservation Population by Sex/Age**

Male	6,214
Female	5,939
Under 18	2,882
18 & over	9,271
20 – 24	516
25 – 34	1,261
35 – 49	2,501
50 – 64	3,146
65 & over	1,572

**Southern Ute Reservation Population by Race**

White	9,674
African American	40
Asian	62
American Indian and Alaska Native	1,388
Native Hawaiian and Pacific Islander	10
Other	468
Identified by two or more	511

<sup>10</sup> U.S. Census Bureau, 2010 Census, 2010 Demographic Profile Data, Southern Ute Reservation and Off-Reservation Trust Land, Select State “Colorado” Select Areas Within “AIAN Areas” Select “Southern Ute Reservation and Off-Reservation Trust Land” <http://www.census.gov/popfinder/> (last visited Jul. 11 2016).





## UTE MOUNTAIN UTE

---

The Ute Mountain Ute [yOOt] Tribe is located within the southwest corner of Colorado. Originally, the Southern Ute and the Ute Mountain Ute Tribe were once a part of one, contiguous Indian tribal reservation. However, in 1896, Chief Ignacio led the Weeminuche band of Utes (now the Ute Mountain Utes) away from the neighboring Southern Ute Reservation to form its own tribal reservation.<sup>11</sup> The remaining Ute bands are located on the Uintah and Ouray Reservation of eastern Utah.

The Ute Mountain Ute Tribe has a 993-square-mile reservation with about 575,000 contiguous acres, primarily in Colorado, but the Tribe's land holdings also extend into the states of Utah and New Mexico. The Tribe has approximately 2,012 enrolled members who reside both on the Tribe's reservation, as well as off the reservation.<sup>12</sup> The Ute Mountain Ute tribal administration is located in the town of Towaoc, Colorado, while the Tribe's White Mesa Ute community is located westward in Blanding, Utah. Similar to the Southern Ute Tribe, the Tribe has a seven-member tribal council, including a Chairman. Within the Ute Mountain Ute Tribal Code, there is a children's code that was enacted in 1987.

Moreover, the Ute Mountain Ute maintains a detention facility on its tribal reservation, called the Chief Ignacio Justice Center, a 64,000 square foot facility that opened in 2001.<sup>13</sup> Within this large facility, there are both adult and juvenile detention operations. There is also a detox center as well as rehabilitation services. In regards to juvenile detention, the Chief Ignacio Juvenile Detention Center can house up to twenty-two juveniles. According to Bureau of Indian Affairs, this detention facility houses detained juveniles from the twenty northern and southern Pueblo Tribes, the Mescalero Tribes, the Hop Tribe, the Navajo Nation, and the Havasupai Tribe, in addition to the Ute Mountain Ute Tribe.<sup>14</sup>

---

<sup>11</sup> Nancy Lofholm, *Vision of change drives next generation of Ute Mountain Ute leaders*, DENVER POST, <http://www.denverpost.com/2013/11/30/vision-of-change-drives-next-generation-of-ute-mountain-ute-leaders/> (last updated April 28, 2016 6:53am).

<sup>12</sup> Bureau of Indian Affairs, *Ute Mountain Ute Agency*, <http://www.bia.gov/WhoWeAre/RegionalOffices/Southwest/WeAre/UteMountainUte/index.htm> (last visited Jul. 11 2016).

<sup>13</sup> Jim Mimiaga, *New jail opens in Towaoc*, CORTEZ JOURNAL (Mar. 20, 2001) <http://archive.cortezjournal.com/archives/1news1177.htm>.

<sup>14</sup> Bureau of Indian Affairs, Office of Justice Services Juvenile Educational Programs, 2014 at 2 (Oct. 2014) available at <https://www.washingtonpost.com/r/2010-2019/WashingtonPost/2014/11/20/National-Security/Graphics/JDC%20Education%20Status%202014%2011.09.14.pdf> (last visited Jul. 11 2016) (hereinafter OJS Juvenile Educational Programs).

### Ute Mountain Ute Contact Information

Tribal Chairman and Tribal Council  
124 W. Mike Wash Road Tribal Complex  
P.O. Drawer JJ  
Towaoc, CO 81334  
Tel: (970) 565-3751

Peter Ortego – Ute Mtn. Ute General Counsel  
P.O. Box 128  
Towaoc, CO 81334  
Tel: (970) 564-5641  
Fax: (970) 565-0750  
portego@utemountain.org

Chief Ignacio Justice Center - Juvenile Detention  
Michelle Kedelty  
Tel: 970-565-0851  
michelle.kedelty@bia.gov

### 2010 Demographic Profile of the Ute Mountain Ute Reservation (CO & UT)<sup>15</sup>

#### Ute Mountain Ute Reservation Population

Total Population	1,742
------------------	-------

#### Ute Mountain Ute Reservation Population by Sex/Age

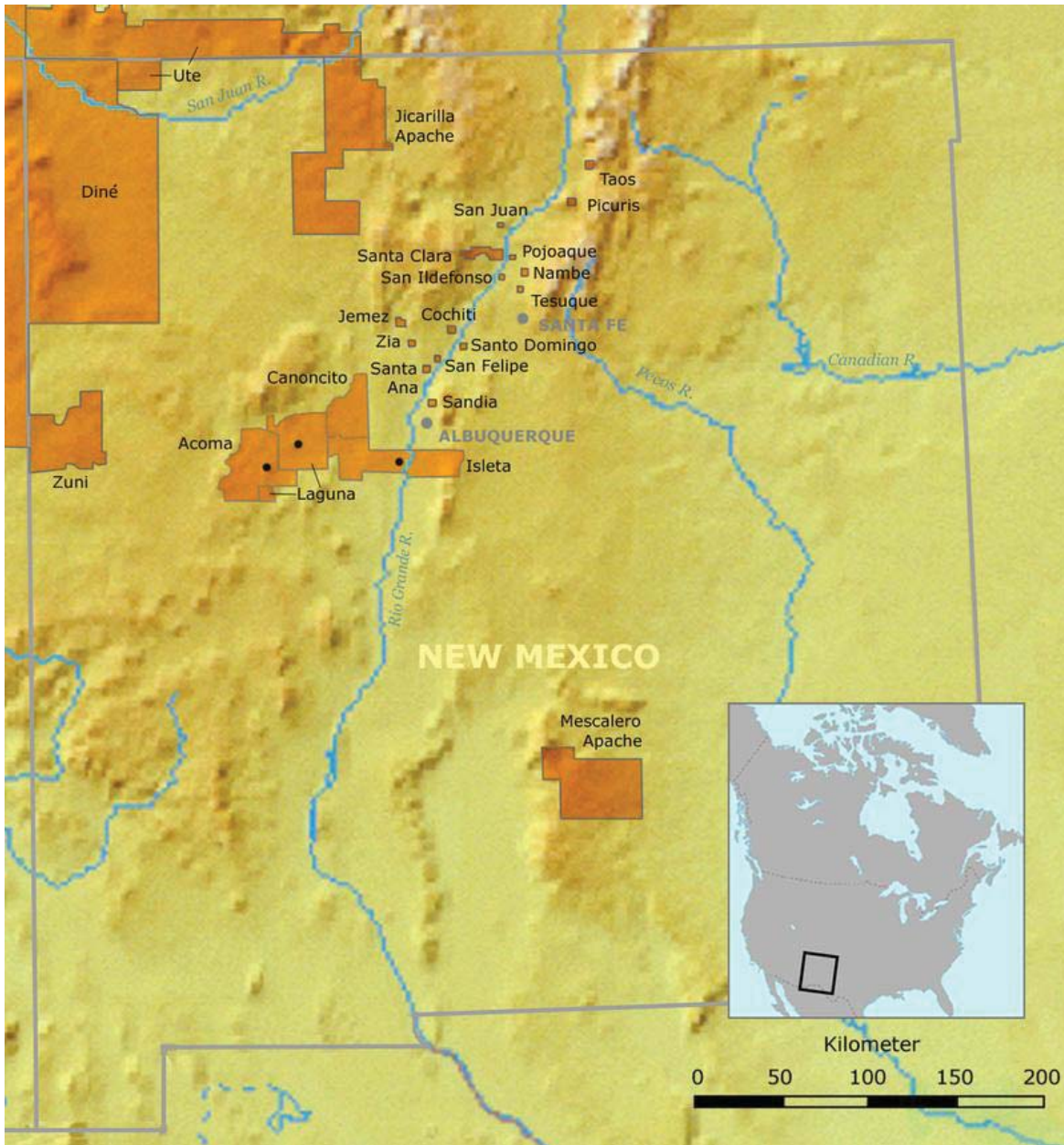
Male	821
Female	921
Under 18	604
18 & over	1,001
20 – 24	158
25 – 34	224
35 – 49	357
50 – 64	241
65 & over	84

#### Ute Mountain Ute Reservation Population by Race

White	40
African American	0
Asian	0
American Indian and Alaska Native	1,652
Native Hawaiian and Pacific Islander	0
Other	1
Identified by two or more	49

<sup>15</sup> U.S. Census Bureau, 2010 Census, 2010 Demographic Profile Data, Ute Mountain Reservation and Off-Reservation Trust Land, Select State “Colorado” Select Areas Within “AIAN Areas” Select “Ute Mountain Reservation and Off-Reservation Trust Land” <http://www.census.gov/popfinder/> (last visited Jul. 11 2016).

# NEW MEXICO PUEBLOS



In total, there are nineteen New Mexico tribal pueblos, located primarily in northwestern portion of the state. There are eight northern pueblos (which are all located north of the city of Santa Fe), and twelve southern pueblos. One of the southern pueblo tribes includes the sole tribal pueblo in Texas, the Yselta Del Sur Pueblo. Each pueblo has its own autonomous tribal government, but there is also a consortium of pueblo governments discussed below.

The **Eight Northern Pueblos** of New Mexico are Taos, Picuris, Santa Clara, Ohkay Owingeh (formerly San Juan), San Ildefonso, Nambé, Pojoaque, and Tesuque.<sup>16</sup> These pueblos make up the *Eight Northern Pueblos Council* (ENIPC), a nonprofit consortium



<sup>16</sup> See generally Eight Northern Indian Pueblos Council, Inc., [www.enipc.org/](http://www.enipc.org/) (last visited Jul. 11, 2016).

founded in 1962. ENIPC advocates for the legal interests of these eight pueblos. The capital of the Eight Northern Pueblos is located in Ohkay Owingeh (formerly known as San Juan Pueblo). The current ENIPC Board Chairmen is the Honorable J. Michael Chavarria from the Pueblo of Santa Clara. The Executive Director is Gilbert Vigil and is a member of Tesuque Pueblo. The contact number for the ENIPC is (505) 747-1593.



## LAGUNA PUEBLO

---

Laguna (lah-GOO-nah) Pueblo is located forty-five miles west of Albuquerque, New Mexico. The Laguna Pueblo reservation consists of approximately 500,000 acres of land, which is situated in Cibola, Valencia, Bernalillo and Sandoval counties. The residents of the Laguna Pueblo live in six villages: Laguna, Mesita, Paguete, Seama, Paraje, and Encinal. The Pueblo has approximately 8,000 tribal members, with about half living on the Laguna reservation.

In terms of its judiciary, the Pueblo Court consists of Civil, Criminal, Traffic and Community Wellness Courts. The Public Defender, the Prosecutor and Probation and Parole Services, are also under the umbrella of the Laguna Court/Judicial Branch.<sup>17</sup> The Laguna Pueblo has a Children's Code that includes both status offenses and non-status offenses.<sup>18</sup> Moreover, Laguna Pueblo has Juvenile/Children's court procedures in place. There is also a juvenile diversion program for alternative youth sentencing, including a Community Wellness Court that uses a juvenile Healing-to-Wellness model that is culturally-driven for its participants.

Laguna juvenile services include (but are not limited to): the supervision of juveniles placed on probation, truancy meetings, supervision and referral of juvenile complaints to the Juvenile Prosecutor, and transport to and from juvenile detention and treatment services. Both adult and juvenile Laguna probation officers conduct office visits, home/school visits, urine drug and/or alcohol breath testing, and case staffing with appropriate community service providers. There is an adult detention facility on the Laguna Pueblo that can house up to forty-three adults.<sup>19</sup> In 2012, Laguna Pueblo reported that it had a formal agreement in place with the Gallup Juvenile Detention facility and the Santa Fe Youth Detention facility for those facilities to receive Laguna tribal juveniles who are detained.<sup>20</sup> Last, the Pueblo has its own sex offender registry.<sup>21</sup>

### Laguna Pueblo Contact Information

Laguna Pueblo Court  
P.O. Box 194  
Old Laguna, NM 87026  
Tel: 505-552-1900

Laguna Detention Facility  
31 Rodeo Drive  
Laguna N.M. 87026  
Tel: (505) 552-1986

Healing to Wellness Court  
P.O. Box 194  
Laguna, NM 87026  
Tel: (505) 552-6687

---

<sup>17</sup> See generally Judicial Services, Pueblo of Laguna, <http://www.lagunapueblo-nsn.gov/pol-judicial-services.aspx> (last visited Jul. 11, 2016).

<sup>18</sup> See Pueblo of Laguna Tribal Court Handbook, University of New Mexico Tribal Law Journal (Spring 2012) available at [http://lawschool.unm.edu/tlj/handbook/pdfs/Laguna\\_Pueblo\\_2012.pdf](http://lawschool.unm.edu/tlj/handbook/pdfs/Laguna_Pueblo_2012.pdf) (hereinafter Laguna Tribal Court Handbook).

<sup>19</sup> *Jails in Indian Country*, *supra* note 1, at 11, See generally Laguna Detention Facility, Pueblo of Laguna, <http://www.lagunapueblo-nsn.gov/pol-judicial-services.aspx> (last visited Jul. 11, 2016).

<sup>20</sup> See Laguna Tribal Court Handbook, *supra* note 18, at 15.

<sup>21</sup> See generally The Pueblo of Laguna Sex Offender Registry, <http://laguna.nsopw.gov/>.

2010 Demographic Profile of Laguna Pueblo<sup>22</sup>

<b><u>Laguna Pueblo Population</u></b>	
Total Population	4,043

<b><u>Laguna Pueblo Population by Sex/Age</u></b>	
Male	1,967
Female	2,076
Under 18	1,135
18 & over	2,908
20 – 24	250
25 – 34	533
35 – 49	747
50 – 64	708
65 & over	518

<b><u>Laguna Pueblo Population by Race</u></b>	
White	78
African American	4
Asian	21
American Indian and Alaska Native	3,849
Native Hawaiian and Pacific Islander	0
Other	26
Identified by two or more	65

<sup>22</sup> U.S. Census Bureau, 2010 Census, 2010 Demographic Profile Data, Laguna Pueblo and Off-Reservation Trust Land, Select State “New Mexico” Select Areas Within “AIAN Areas” Select “Laguna Pueblo and Off-Reservation Trust Land” <http://www.census.gov/popfinder/> (last visited Jul. 11 2016).





## ACOMA PUEBLO

---

Acoma (AH-koh-mah) Pueblo is located sixty miles west of Albuquerque. The pueblo, known as “Sky City” consists of 155 acres of land atop a mesa. Three villages make up the Acoma Pueblo: Sky City (Old Acoma), Acomita, and Mcartys. Acoma Pueblo has a juvenile justice code within its tribal code, but only for status offenses.<sup>23</sup> Notably, the Acoma Pueblo has procedures in place for violations of its own traditional laws.<sup>24</sup> As of 2013, the Acoma Pueblo tribal court disclosed that there were no juvenile court procedures in place within its tribal judicial system.<sup>25</sup> This pueblo contracts with McKinley County Juvenile Detention Center, located in Gallup, New Mexico, and also has an MOU in place with certain tribes who also have detention centers as well.<sup>26</sup> Moreover, the Acoma Pueblo has a system in place to accept pueblo members who were convicted in state court of certain types of crimes into the Pueblo’s Wellness program. However, the Healing to Wellness Court in the Acoma Pueblo is only for adults. Moreover, the Acoma Pueblo also has a detention facility that can house up to forty-eight adults.<sup>27</sup> Notably, since 2012, the Acoma Pueblo also has a Sex Offender Registry program in place.<sup>28</sup>

### [Acoma Pueblo Contact Information](#)

Acoma Pueblo Governor Kurt Riley  
P.O. Box 309  
Acoma, NM 87034  
Tel: (505) 552-6604

Probation Officer Clarice M. Garcia  
(505) 552-7500 x 317  
[clarice.garcia@puebloofacoma.org](mailto:clarice.garcia@puebloofacoma.org)

Acoma Court & Healing to Wellness Court  
Lea Lorenzo, Court Administrator  
P.O. Box 347 Acoma, NM 87034  
Tel: 505-552-7500  
[llorenzo@puebloofacoma.org](mailto:llorenzo@puebloofacoma.org)

Court Assistant Leila Chavez  
(505) 552-7500 x 315  
[lchavez@puebloofacoma.org](mailto:lchavez@puebloofacoma.org)

Acoma Chief Judge Randolph M. Collins  
Tel: (505) 552-7500 x 318  
[rmcollinslaw@aol.com](mailto:rmcollinslaw@aol.com)

Civil Court Clerk Joyce Luarkie  
(505) 552-7500 x 319  
[jluarkie@puebloofacoma.org](mailto:jluarkie@puebloofacoma.org)

---

<sup>23</sup> See Acoma Pueblo Tribal Court Handbook, University of New Mexico Tribal Law Journal 15 (Fall 2013) available at <http://lawschool.unm.edu/tlj/handbook/pdfs/acoma-2013.pdf>.

<sup>24</sup> *Id.* at 13.

<sup>25</sup> *Id.* at 12.

<sup>26</sup> *Id.* at 14.

<sup>27</sup> See generally Detention Center, Pueblo of Acoma, [http://puebloofacoma.org/Detention\\_Center.aspx](http://puebloofacoma.org/Detention_Center.aspx) (last visited Jul. 11, 2016).

<sup>28</sup> See generally Acoma SORNA Program, <http://puebloofacoma.org/sorna.aspx> (last visited Jul. 11, 2016).

2010 Demographic Profile of Acoma Pueblo<sup>29</sup>

<b><u>Acoma Pueblo Population</u></b>	
Total Population	3,011

**Acoma Pueblo Population by Sex/Age**

Male	1,397
Female	1,614
Under 18	892
18 & over	2,119
20 – 24	225
25 – 34	389
35 – 49	587
50 – 64	502
65 & over	332

**Acoma Pueblo Population by Race**

White	47
African American	3
Asian	0
American Indian and Alaska Native	2,906
Native Hawaiian and Pacific Islander	0
Other	12
Identified by two or more	43

<sup>29</sup> U.S. Census Bureau, 2010 Census, 2010 Demographic Profile Data, Acoma Pueblo and Off-Reservation Trust Land, Select State “New Mexico” Select Areas Within “AIAN Areas” Select “Acoma Pueblo and Off-Reservation Trust Land,” <http://www.census.gov/popfinder/> (last visited Jul. 11 2016).



## ISLETA PUEBLO

---

The Pueblo of Isleta (iss-LEH-tah) is fifteen miles south of Albuquerque in the Rio Grande Valley. It is adjacent to the western portion of Laguna Pueblo. The Pueblo's land base covers an area of more than 329 square miles. Notably in August 2015, the Pueblo announced that its ancestral Tiwa language would begin to be taught to Isleta children at the Isleta Elementary School, which followed the transfer of the school from federal to more localized, tribal control.<sup>30</sup> The Isleta Tribal Court is one of two courts within the Judicial Branch of the Pueblo of Isleta tribal government.<sup>31</sup> The Pueblo of Isleta also has an Appellate Court which is separate from the lower court that reviews appeals.<sup>32</sup> Notably, the Pueblo has its own Public Defender Office located on the reservation.<sup>33</sup> In this Pueblo's tribal court, there is a Juvenile code, for both status offenses and non-status (criminal) offenses.<sup>34</sup> The Pueblo also authorizes juvenile commitments.<sup>35</sup> The Pueblo contracts with Valencia County's adult and juvenile detention facilities, Southern Ute's adult detention facility, and the Bernalillo County Juvenile detention center.<sup>36</sup>

### [Isleta Pueblo Contact Information](#)

Pueblo of Isleta  
P.O. Box 1270  
Isleta, NM 87022  
Tel: (505) 869-3111

Isleta Pueblo Tribal Court  
P.O. Box 729  
Isleta, NM 87022  
Tel: (505) 869-9699

Isleta Pueblo Public Defender Office  
Public Defender: David Hogans  
P.O. Box 1270  
Isleta, NM 87022  
Tel: (505)-869-9825

---

<sup>30</sup> Ryan Boetel, *A new beginning for education at Isleta Pueblo*, ALBUQUERQUE JOURNAL (Aug. 2, 2015), <http://www.abqjournal.com/621921/a-new-beginning-for-education-at-isleta-pueblo.html>.

<sup>31</sup> *See generally*, About Isleta Tribal Court, <http://www.isletapueblo.com/tribal-courts.html>.

<sup>32</sup> *Id.*

<sup>33</sup> *See generally* The Isleta Pueblo Public Defender, <http://www.isletapueblo.com/public-defender.html>.

<sup>34</sup> *See* Isleta Pueblo Tribal Court Handbook, University of New Mexico Tribal Law Journal 14 (Spring 2012) available at [http://lawschool.unm.edu/tlj/handbook/pdfs/Isleta\\_Pueblo\\_2012.pdf](http://lawschool.unm.edu/tlj/handbook/pdfs/Isleta_Pueblo_2012.pdf)

<sup>35</sup> *Id.*

<sup>36</sup> *Id.* at 16.

2010 Demographic Profile of Isleta Pueblo<sup>37</sup>

<b><u>Isleta Pueblo Population</u></b>	
Total Population	3,400

<b><u>Isleta Pueblo Population by Sex/Age</u></b>	
Male	1,639
Female	1,761
Under 18	953
18 & over	2,447
20 – 24	233
25 – 34	408
35 – 49	679
50 – 64	634
65 & over	399

<b><u>Isleta Pueblo Population by Race</u></b>	
White	150
African American	2
Asian	3
American Indian and Alaska Native	3,097
Native Hawaiian and Pacific Islander	0
Other	71
Identified by two or more	77

<sup>37</sup> U.S. Census Bureau, 2010 Census, 2010 Demographic Profile Data, Isleta Pueblo and Off-Reservation Trust Land, Select State “New Mexico” Select Areas Within “AIAN Areas” Select “Isleta Pueblo and Off-Reservation Trust Land,” <http://www.census.gov/popfinder/> (last visited Jul. 11 2016).



# NAMBÉ PUEBLO

---

The Nambé (nahm-BAY) Pueblo is located roughly fifteen miles north of Santa Fe, at the base of the Sangre de Cristo Mountains. The Pueblo itself encompasses nearly 20,000 acres. Notably, the Pueblo is almost completely surrounded by non-Indian communities, most of which are Hispanic, and is home to approximately 1,100 tribal members.<sup>38</sup> The Pueblo has a children’s court, with a juvenile justice section within its Pueblo of Nambé Tribal Law and Order Code, for both status and non-status (criminal) offenses, with juvenile court procedures to govern these cases.<sup>39</sup> Moreover, the Pueblo also permits juvenile commitments within its tribal code.<sup>40</sup> The Pueblo contracts with Santa Fe County for its juvenile detention services, and as of 2013, it had a pending contract with Southern Ute’s adult detention facility.<sup>41</sup>

## Nambé Pueblo Contact Information

Nambé Tribal Court  
Mailing: Route 1 Box 117-BB  
Santa Fe, NM 87506  
Phone: 505-455-0142  
Fax: 505-455-9136

Roman J. Duran - Chief Judge  
judge@nambepueblo.org

Kym E. Valencia - Court Clerk  
kvalencia@nambepueblo.org

## 2010 Demographic Profile of Nambé Pueblo<sup>42</sup>

<u>Nambé Pueblo Population</u>	
Total Population	1,611

<u>Nambé Pueblo Population by Sex/Age</u>	
Male	790
Female	821
Under 18	389
18 & over	1,222
20 – 24	71
25 – 34	160
35 – 49	324
50 – 64	350
65 & over	273

---

<sup>38</sup> See generally Nambé Pueblo, <http://nambepueblo.org/>.

<sup>39</sup> See Nambé Tribal Court Handbook, University of New Mexico Tribal Law Journal 13 (Fall 2013) available at <http://lawschool.unm.edu/tlj/handbook/pdfs/nambe-2013.pdf>.

<sup>40</sup> *Id.* at 14.

<sup>41</sup> *Id.* at 16.

<sup>42</sup> U.S. Census Bureau, 2010 Census, 2010 Demographic Profile Data, Nambé Pueblo and Off-Reservation Trust Land, Select State “New Mexico” Select Areas Within “AIAN Areas” Select “Nambé Pueblo and Off-Reservation Trust Land,” <http://www.census.gov/popfinder/> (last visited Jul. 11 2016).



<u>Nambé Pueblo Population by Race</u>	
White	374
African American	8
Asian	8
American Indian and Alaska Native	477
Native Hawaiian and Pacific Islander	2
Other	608
Identified by two or more	134



## OHKAY-OWINGEH

The Ohkay Owingeh (OH-kay oh-WEEN-geh) Pueblo is located five miles north of Española off US-285. This pueblo was previously known as the San Juan Pueblo, but in 2005, the pueblo changed back to its original name, Ohkay Owingeh, which means "place of the strong people."<sup>43</sup> The Pueblo is headquarters of the aforementioned Eight Northern Indian Pueblo Council, which promotes cooperative efforts among the northern pueblos. The Pueblo has a juvenile justice code in place for both status and non-status offenses within its law and order code.<sup>44</sup> Moreover, it has juvenile court procedures in place.<sup>45</sup> The Pueblo contracts with the Southern Ute Tribe and the Santa Fe Adult Detention Center for its detention services.<sup>46</sup> Notably, the Pueblo has a tribal police department holding facility with a capacity of two detainees.<sup>47</sup>

### [Ohkay Owingeh Pueblo Contact Information](#)

Pueblo of Ohkay Owingeh Tribal Court  
 Geoffrey Tager – Chief Judge  
 P.O. Box 1128  
 San Juan Pueblo, NM 87566  
 Tel: 505-852-4475

<sup>43</sup> Martin Salazar, *San Juan Pueblo Tries To Change Name*, ALBUQUERQUE JOURNAL (Sept. 18, 2005) <http://www.abqjournal.com/news/state/391156nm09-18-05.htm>.

<sup>44</sup> See Ohkay Owingeh Tribal Court Handbook, University of New Mexico Tribal Law Journal, 12 (Fall 2011) available at [http://lawschool.unm.edu/tlj/handbook/pdfs/Ohkay\\_Owingeh\\_Pueblo\\_2011.pdf](http://lawschool.unm.edu/tlj/handbook/pdfs/Ohkay_Owingeh_Pueblo_2011.pdf).

<sup>45</sup> *Id.* at 14.

<sup>46</sup> *Id.* at 15.

<sup>47</sup> Todd D. Minton, Bureau of Indian Affairs, *Jails in Indian County, 2013* (NCJ 247017), 11 (Jul. 2014), available at <http://www.bjs.gov/content/pub/pdf/jic13.pdf> (last visited Jul. 11, 2016).

<b><u>Ohkay Owingeh Pueblo Population</u></b>	
Total Population	6,309

<b><u>Ohkay Owingeh Pueblo Population by Sex/Age</u></b>	
Male	3,147
Female	3,162
Under 18	1,629
18 & over	4,680
20 – 24	445
25 – 34	741
35 – 49	1,307
50 – 64	1,179
65 & over	809

<b><u>Ohkay Owingeh Pueblo Population by Race</u></b>	
White	1,639
African American	13
Asian	27
American Indian and Alaska Native	1,420
Native Hawaiian and Pacific Islander	8
Other	3,003
Identified by two or more	199

<sup>48</sup> U.S. Census Bureau, 2010 Census, 2010 Demographic Profile Data, Ohkay Owingeh Pueblo and Off-Reservation Trust Land, Select State “New Mexico” Select Areas Within “AIAN Areas” Select “Ohkay Owingeh Pueblo and Off-Reservation Trust Land,” <http://www.census.gov/popfinder/> (last visited Jul. 11 2016).



# COCHITI

The Cochiti (KOH-chee-tee) Pueblo is midway between the cities Albuquerque and Santa Fe, about fifteen miles north of Santa Fe and fifty-five miles north of Albuquerque. The Pueblo’s land base is contained within 53,779 acres of reservation.<sup>49</sup> The Cochiti Pueblo has a tribal court system in place, however little is known about its juvenile justice services.

## Cochiti Pueblo Contact Information

Pueblo de Cochiti  
255 Cochiti Street  
P.O. Box 70  
Cochiti Pueblo, NM 87072  
Tel: (505) 465-2244  
info@pueblodecochiti.org

Cochiti Pueblo Tribal Court  
P.O. Box 70  
Cochiti Pueblo, NM 87072  
Tel: (505) 465-2244  
adrian\_lewis@pueblodecochiti.org

## 2010 Demographic Profile of Cochiti Pueblo<sup>50</sup>

### Cochiti Pueblo Population

Total Population	1,727
------------------	-------

### Cochiti Pueblo Population by Sex/Age

Male	846
Female	881
Under 18	429
18 & over	1,298
20 – 24	81
25 – 34	175
35 – 49	317
50 – 64	377
65 & over	309

<sup>49</sup> See generally, Pueblo de Cochiti, <http://www.pueblodecochiti.org> (last updated 2003).

<sup>50</sup> U.S. Census Bureau, 2010 Census, 2010 Demographic Profile Data, Cochiti Pueblo and Off-Reservation Trust Land, Select State “New Mexico” Select Areas Within “AIAN Areas” Select “Cochiti Pueblo and Off-Reservation Trust Land,” <http://www.census.gov/popfinder/> (last visited Jul. 11 2016).

<u>Cochiti Pueblo Population by Race</u>	
White	455
African American	11
Asian	6
American Indian and Alaska Native	811
Native Hawaiian and Pacific Islander	2
Other	388
Identified by two or more	54



## PICURIS

The Picuris (peec-kuhr-REES) Pueblo, often referred to as "Hidden Valley," is located twenty-five miles southeast of Taos, close to the town of Peñasco on NM-75. It is one of the smallest of the New Mexico pueblos in terms of its reservation's geographical size. Its remote land base totals 297 total acres. The Pueblo is a member of the Eighth Northern Pueblos Association. The Picuris Pueblo has a juvenile justice code as well as codified juvenile court procedures.<sup>51</sup> Notably, the Pueblo has a juvenile appeals process.<sup>52</sup> Moreover, it has an informal agreement with detention centers that are off-reservation, however the Pueblo did not provide this information for its tribal court handbook. However, the Pueblo did disclose that it uses the Eight Northern Pueblo treatment services since it is a member of the organizations.<sup>53</sup>

### [Picuris Pueblo Contact Information](#)

Pueblo of Picuris - Tribal Court  
P.O. Box 127  
Penasco, NM 87553  
Tel: 505-587-2519

Hon. Albert Banteah - Chief Judge  
P.O. Box 127  
Penasco, NM 87553  
Tel: (505) 587-2519  
judgebanteah@gmail.com

Edwina Pacheco - Court Clerk  
EdwinaPacheco@yahoo.com

<sup>51</sup> See Picuris Pueblo Tribal Court Handbook, University of New Mexico Tribal Law Journal, 9, 13 (Spring 2012) available at [http://lawschool.unm.edu/tlj/handbook/pdfs/Picuris\\_Pueblo\\_2012.pdf](http://lawschool.unm.edu/tlj/handbook/pdfs/Picuris_Pueblo_2012.pdf).

<sup>52</sup> *Id.* at 14.

<sup>53</sup> *Id.* at 16.

2010 Demographic Profile of Picuris Pueblo<sup>54</sup>

<b><u>Picuris Pueblo Population</u></b>	
Total Population	1,886

<b><u>Picuris Pueblo Population by Sex/Age</u></b>	
Male	937
Female	949
Under 18	446
18 & over	1,440
20 – 24	74
25 – 34	173
35 – 49	402
50 – 64	387
65 & over	351

<b><u>Picuris Pueblo Population by Race</u></b>	
White	1,020
African American	3
Asian	2
American Indian and Alaska Native	191
Native Hawaiian and Pacific Islander	1
Other	539
Identified by two or more	130

<sup>54</sup> U.S. Census Bureau, 2010 Census, 2010 Demographic Profile Data, Picuris Pueblo and Off-Reservation Trust Land, Select State “New Mexico” Select Areas Within “AIAN Areas” Select “Picuris Pueblo and Off-Reservation Trust Land” <http://www.census.gov/popfinder/> (last visited Jul. 11 2016).





## POJOAQUE

---

The Pojoaque (po-HWAH-keh) Pueblo is located fifteen miles north of Santa Fe. It is a member of the Eight Northern Pueblos. The Pueblo has a juvenile justice code in place for both status and non-status offenses.<sup>55</sup> Its tribal code also authorizes juvenile commitments.<sup>56</sup> Moreover, within the tribal code, there are codified juvenile court procedures in place.<sup>57</sup>

Notably, the Pojoaque Pueblo has a Healing to Wellness Court in its court system. In terms of a detention contract, the Pueblo has informal agreements in place with the counties of Santa Fe, Rio Arriba, and Los Alamos of New Mexico, as well as the Southern Ute Tribe for detention services.<sup>58</sup> Moreover, the Pueblo also has a contract in place with Southern Ute for use of its adult correctional facility.<sup>59</sup> The entirety of the Pojoaque Pueblo's Law and Order Code (as of March 17, 2016) can be found [here](#).

### Pojoaque Pueblo Contact Information

Joseph Talachy - Governor  
Melissa Talachy – Gov. Administrative Assistant  
mtalachy@pojoaque.org  
Tel: (505) 455-5052

Carrie Frias – Chief General Counsel  
cfrias@pojoaque.org

Pojoaque Tribal Court & Healing to Wellness Court  
58 Cities of Gold Road, Suite 5  
Santa Fe, NM 87506  
Phone: (505) 455-2271  
fdemolli@pojoaque.org

Kim McGinnis - Chief Judge  
kmcginnis@pojoaque.org

Evonne Martinez - Path to Wellness Coordinator  
evonne.martinez@pojoaque.org

Heather Garcia - Court Clerk  
heather.garcia@pojoaque.org

Dawn Desmet - Probation Officer  
ddesmet@pojoaque.org

---

<sup>55</sup> See Pojoaque Tribal Court Handbook, University of New Mexico Tribal Law Journal, 11 (Spring 2011) available at [http://lawschool.unm.edu/tlj/handbook/pdfs/Pojoaque\\_Pueblo\\_2011\\_02\\_04.pdf](http://lawschool.unm.edu/tlj/handbook/pdfs/Pojoaque_Pueblo_2011_02_04.pdf).

<sup>56</sup> *Id.* at 12.

<sup>57</sup> *Id.* at 13.

<sup>58</sup> *Id.* at 14.

<sup>59</sup> *Id.*

<b><u>Pojoaque Pueblo Population</u></b>	
Total Population	3,316

**Pojoaque Pueblo Population by Sex/Age**

Male	1,664
Female	1,652
Under 18	827
18 & over	2,489
20 – 24	184
25 – 34	409
35 – 49	691
50 – 64	698
65 & over	431

**Pojoaque Pueblo Population by Race**

White	1,828
African American	26
Asian	15
American Indian and Alaska Native	406
Native Hawaiian and Pacific Islander	4
Other	876
Identified by two or more	161



## **SAN FELIPE**

The Pueblo of San Felipe (sahn fey-LEE-peh) is located ten miles north of the city of Bernalillo and thirty miles northwest of Albuquerque off I-25. The Pueblo is known to be extremely protective of its traditions and culture. Notably, outsiders are generally not encouraged to visit, but the Pueblo does welcome visitors to the Annual Feast Day on May 1<sup>st</sup>. While little is known regarding the Pueblo’s tribal court system, as of August,

<sup>60</sup> U.S. Census Bureau, 2010 Census, 2010 Demographic Profile Data, Pojoaque Pueblo and Off-Reservation Trust Land, Select State “New Mexico” Select Areas Within “AIAN Areas” Select “San Ildefonso Pueblo and Off-Reservation Trust Land” <http://www.census.gov/popfinder/> (last visited Jul. 11 2016).

2013 the San Felipe Pueblo Council approved a Memo of Agreement (MOA) with Sandoval County of New Mexico for sex offenders to comply with SORNA (Sexual Offender Registration and Notification Act).<sup>61</sup>

### San Felipe Pueblo Contact Information

San Felipe Pueblo  
Governor Michael T. Sandoval  
Lt. Gov. James Candelaria  
P.O. Box 4339  
San Felipe Pueblo, NM 87001  
Tel: (505) 867-3381

Anita H. Reina – Judge  
Tel: (505) 867-2996  
AReina@sfpueblo.com

Pueblo of San Felipe Tribal Court  
P.O. Box 4339  
San Felipe, NM 87001  
Tel: (505) 867-2536, ext. 1104

### 2010 Demographic Profile of San Felipe Pueblo<sup>62</sup>

<b><u>San Felipe Pueblo Population</u></b>	
Total Population	3,563

<b><u>San Felipe Pueblo Population by Sex/Age</u></b>	
Male	1,722
Female	1,841
Under 18	1,190
18 & over	2,373
20 – 24	289
25 – 34	451
35 – 49	713
50 – 64	532
65 & over	265

<b><u>San Felipe Pueblo Population by Race</u></b>	
White	425
African American	3
Asian	9
American Indian and Alaska Native	2,819

<sup>61</sup> See San Felipe Tribal Court Handbook, University of New Mexico Tribal Law Journal, 17 (Fall 2013) available at <http://lawschool.unm.edu/tlj/handbook/pdfs/san-felipe-2013.pdf>.

<sup>62</sup> U.S. Census Bureau, 2010 Census, 2010 Demographic Profile Data, Pojoaque Pueblo and Off-Reservation Trust Land, Select State “New Mexico” Select Areas Within “AIAN Areas” Select “San Felipe Pueblo and Off-Reservation Trust Land” <http://www.census.gov/popfinder/> (last visited Jul. 11 2016).

Native Hawaiian and Pacific Islander	0
Other	264
Identified by two or more	43



## **PUEBLO DE SAN ILDEFONSO**

Pueblo de San Ildefonso (san ill-day-FON-so) is located twenty miles northwest of Santa Fe off NM 50. The Pueblo consists of over 60,000 acres, or 4.2 square miles. The Pueblo has an enrollment of approximately 750 people.<sup>63</sup> San Ildefonso Pueblo is a member of the Eight Northern Pueblos. The traditional name for San Ildefonso Pueblo is “Po-woh-ge-oweenge,” meaning “where the water cuts through.” This Pueblo has a juvenile justice code in place for both status and non-status offenses, however in this code there are also consent decrees that include diversion and traditional Pueblo apologies.<sup>64</sup> Moreover, the Pueblo has juvenile court procedures in place to adjudicate these types of offenses.<sup>65</sup> Notably, the Pueblo disclosed in 2013 that it has a formal agreement with Santa Fe County for cross-deputization.<sup>66</sup> Moreover, the Pueblo also has contracts in place for detention and correction services, but no further information was provided.<sup>67</sup>

### [San Ildefonso Pueblo Contact Information](#)

Ildefonso Pueblo Tribal Court  
 Mekko Miller - Judge  
 William S Christian – Interim Court Clerk  
 02 Tunyo Po  
 Santa Fe, NM 87506  
 Tel: 505-455-4101  
[tribalcourts@sanipueblo.org](mailto:tribalcourts@sanipueblo.org)

Michael Batista - Probation Officer  
 Tel: 505-753-4790

James R. Mountain – Governor  
 Tel: 505-455-4102  
[governor@sanipueblo.org](mailto:governor@sanipueblo.org)

Exec. Administrative Assistant:  
 Myra Garcia  
 Tel: 505-455-4101  
[magarcia@sanipueblo.org](mailto:magarcia@sanipueblo.org)

Darren Stand – Pueblo Attorney  
 Tel: 505-455-4118  
[dbstand@sanipueblo.org](mailto:dbstand@sanipueblo.org)

Barbara Romero - Receptionist  
 Tel: 505-455-2273  
[barb@sanipueblo.org](mailto:barb@sanipueblo.org)

<sup>63</sup> See Welcome to the Pueblo de San Ildefonso, <http://www.sanipueblo.org/>.

<sup>64</sup> See San Ildefonso Tribal Court Handbook, University of New Mexico Tribal Law Journal, 13 (Fall 2013) available at <http://lawschool.unm.edu/tlj/handbook/pdfs/san-ildefonso-2013.pdf>.

<sup>65</sup> *Id.*

<sup>66</sup> *Id.* at 16.

<sup>67</sup> *Id.*

## 2010 Demographic Profile of San Ildefonso Pueblo<sup>68</sup>

<b><u>San Ildefonso Pueblo Population</u></b>	
Total Population	1,752

<b><u>San Ildefonso Pueblo Population by Sex/Age</u></b>	
Male	853
Female	899
Under 18	479
18 & over	1,273
20 – 24	98
25 – 34	209
35 – 49	336
50 – 64	372
65 & over	213

<b><u>San Ildefonso Pueblo Population by Race</u></b>	
White	478
African American	2
Asian	1
American Indian and Alaska Native	440
Native Hawaiian and Pacific Islander	0
Other	715
Identified by two or more	116



## **KEWA**

Kewa Pueblo, formally known as Santo Domingo Pueblo, is roughly halfway between the New Mexico cities of Albuquerque and Santa Fe. The Pueblo is located approximately 25 miles southwest of Santa Fe, 4 miles west of Interstate 25. In 2009, the pueblo officially changed its name to Kewa Pueblo from Santo Domingo Pueblo. The pueblo is open to visitors for its Annual feast day in August. Little is known about the Pueblo's juvenile

<sup>68</sup> U.S. Census Bureau, 2010 Census, 2010 Demographic Profile Data, San Ildefonso Pueblo and Off-Reservation Trust Land, Select State "New Mexico" Select Areas Within "AIAN Areas" Select "San Ildefonso Pueblo and Off-Reservation Trust Land" <http://www.census.gov/popfinder/> (last visited Jul. 11 2016).

justice code from the Kewa Tribal Court website.<sup>69</sup> Notably, however, the Kewa Family Wellness Center provides tribal members with out-patient therapy and traditional counseling services, including outreach, case management services, & community activities, prevention services.<sup>70</sup>

Kewa Pueblo Contact Information

Pueblo of Kewa - Governor's Office  
 Address Rt. 1 Box 111-BB  
 Santo Domingo Pueblo, NM 87052  
 Tel: (505)-455-2036

Kewa Court Clerk: Javin Coriz

Kewa Pueblo Tribal Court  
 P.O. Box 279  
 Santo Domingo, NM 87052  
 Tel: (505) 465-2214  
 Fax: (505) 465-2688

Kewa Court Clerk: Beverly Quintana

Kewa Probation Officer: Chris Lovato

2010 Demographic Profile of Kewa Pueblo<sup>71</sup>

<b><u>Kewa Pueblo Population</u></b>	
Total Population	3,255

<b><u>Kewa Pueblo Population by Sex/Age</u></b>	
Male	1,592
Female	1,663
Under 18	1,089
18 & over	2,166
20 – 24	279
25 – 34	430
35 – 49	608
50 – 64	476
65 & over	240

<b><u>Kewa Pueblo Population by Race</u></b>	
White	19
African American	0
Asian	1
American Indian and Alaska Native	3,192
Native Hawaiian and Pacific Islander	0

<sup>69</sup> See generally Tribal Courts, <http://santodomingotribe.org/tribal-courts-2/> (last updated 2016).

<sup>70</sup> See Kewa Family Wellness Center, <http://santodomingotribe.org/kewa-family-wellness-center/> (last updated 2016).

<sup>71</sup> U.S. Census Bureau, 2010 Census, 2010 Demographic Profile Data, Kewa Pueblo and Off-Reservation Trust Land, Select State “New Mexico” Select Areas Within “AIAN Areas” Select “Kewa Pueblo and Off-Reservation Trust Land” <http://www.census.gov/popfinder/> (last visited Jul. 11 2016).



Other	14
Identified by two or more	29



## SANDIA PUEBLO

Sandia (sahn-DEE-ah) Pueblo, is located fourteen miles north of Albuquerque, and is visible from I-25. The reservation covers 22,877 acres on the east side of the Rio Grande Valley. It currently has roughly 500 tribal members.<sup>72</sup> The Pueblo has its own tribal court system on the reservation with a judge, a court administrator, court clerks, and a probation officer.<sup>73</sup> According the Pueblo's court clerk in 2010, no attorneys are allowed in the Pueblo's tribal court, however tribal religious leaders can act as lay advocates in the Sandia Pueblo court.<sup>74</sup> Moreover, the Pueblo does not have a written tribal code and therefore lacks a written juvenile justice code.<sup>75</sup> In the 2010 survey, the Pueblo also indicated that it contracts with off-reservation entities for both detention and correctional facilities.<sup>76</sup>

### [Sandia Pueblo Contact Information](#)

Pueblo of Sandia  
 Governor Isaac Lujan  
 Lt. Gov. Stuart Paisano 481 Sandia Loop  
 Bernalillo, NM 87004  
 Phone: (505) 867-3317

Pueblo of Sandia Tribal Court  
 Rudy Jaramillo, Court Administrator  
 481 Sandia Loop Road  
 Bernalillo, NM 87004  
 Tel: (505) 771-5009

Adult, Juvenile, Family Healing to Wellness Courts  
 481 Sandia Loop Road  
 Route 5, P.O. Box 315-A  
 Santa Fe, NM 87506  
 Tel: (505) 867-3317

<sup>72</sup> The Pueblo of Sandia, <https://sandiapueblo.nsn.us/> (last updated 2016).

<sup>73</sup> See Sandia Pueblo Tribal Court Handbook, University of New Mexico Tribal Law Journal, 3 (Spring 2010) available at <http://lawschool.unm.edu/tlj/handbook/pdfs/Sandia2010.pdf>.

<sup>74</sup> *Id.* at 6.

<sup>75</sup> *Id.* at 11.

<sup>76</sup> *Id.* at 14.

<b><u>Sandia Pueblo Population</u></b>	
Total Population	4,965

**Sandia Pueblo Population by Sex/Age**

Male	2,440
Female	2,525
Under 18	1,419
18 & over	3,546
20 – 24	342
25 – 34	535
35 – 49	1,004
50 – 64	987
65 & over	531

**Sandia Pueblo Population by Race**

White	2,375
African American	33
Asian	4
American Indian and Alaska Native	638
Native Hawaiian and Pacific Islander	7
Other	1,789
Identified by two or more	119



## **PUEBLO OF TAMAYA (SANTA ANA)**

The Pueblo of Santa Ana (SAHN-tah AN-nah), also known as Tamaya Nation, is a small pueblo located on NM-550, about eighty miles northwest of Bernalillo, just west of the confluence of the Rio Jemez and Rio Grande rivers. Interstate 25 runs through the east of the Pueblo. The Pueblo lands cover 79,000 acres east and

<sup>77</sup> U.S. Census Bureau, 2010 Census, 2010 Demographic Profile Data, Sandia Pueblo and Off-Reservation Trust Land, Select State “New Mexico” Select Areas Within “AIAN Areas” Select “Sandia Pueblo and Off-Reservation Trust Land” <http://www.census.gov/popfinder/> (last visited Jul. 11 2016).

west of the Río Grande River in Sandoval County. Roughly 800 tribal members live within the Pueblo.<sup>78</sup> Notably, the Pueblo tribal court system consists of a Traditional Court and a Contemporary Court.<sup>79</sup> The Contemporary Court also has an appellate court division. Sometimes, however, a case will implicate both types of courts, and the tribal court procedures dictate that the traditional matters will be resolved first and then the case will get transferred to the Contemporary Court.<sup>80</sup> The Pueblo also offers diversion programs for juvenile offenders for non-violent offenses. These programs operate consistent with Pueblo customs and traditions.<sup>81</sup>

### Santa Ana Pueblo Contact Information

Governor Myron Armijo  
 2 Dove Road  
 Santa Ana Pueblo, NM 87004  
 Phone: (505) 867-3301  
 Fax: (505) 867-3395  
 Lt. Gov. Ulysses Leon

Tamaya Nation Tribal Court  
 Lillia Masawiestewa – Court Clerk  
 2 Dove Road  
 Santa Ana Pueblo, NM 87004  
 Tel: 505-771-6735  
 lmasa@santaana-nsn.gov

### 2010 Demographic Profile of Santa Ana Pueblo<sup>82</sup>

<b><u>Santa Ana Pueblo Population</u></b>	
Total Population	621

<b><u>Santa Ana Pueblo Population by Sex/Age</u></b>	
Male	290
Female	331
Under 18	178
18 & over	443
20 – 24	55
25 – 34	94
35 – 49	101
50 – 64	115
65 & over	59

<sup>78</sup> See Tamaya Nation Pueblo Governance, <http://www.santaana-nsn.gov/> (last updated 2010).

<sup>79</sup> See Tamaya Nation Tribal Court, <http://www.santaana-nsn.gov/tribalcourt/> (last updated 2010).

<sup>80</sup> See generally Santa Ana Pueblo Rules and Procedures for the Contemporary Court, available at [http://www.santaana-nsn.gov/tribalcourt/forms/Rules\\_of\\_Procedure\\_for\\_the\\_Contemporary\\_Court.pdf](http://www.santaana-nsn.gov/tribalcourt/forms/Rules_of_Procedure_for_the_Contemporary_Court.pdf) (last updated 2007).

<sup>81</sup> *Id.*

<sup>82</sup> U.S. Census Bureau, 2010 Census, 2010 Demographic Profile Data, Santa Ana Pueblo and Off-Reservation Trust Land, Select State “New Mexico” Select Areas Within “AIAN Areas” Select “Santa Ana Pueblo and Off-Reservation Trust Land”

<http://www.census.gov/popfinder/> (last visited Jul. 11 2016).

<b><u>Santa Ana Pueblo Population by Race</u></b>	
White	18
African American	0
Asian	0
American Indian and Alaska Native	590
Native Hawaiian and Pacific Islander	1
Other	3
Identified by two or more	9



## **SANTA CLARA**

---

Santa Clara Pueblo is two miles south of Española, New Mexico north of Santa Fe. Most of the Santa Clara population lives in the northeastern corner of the pueblo reservation. The largest community on reservation land is the city of Española, although a part of the city is not on reservation territory. The Pueblo is a member of the Eight Northern Pueblos. The Santa Clara pueblo is on the Rio Grande, between Ohkay Owingeh (formerly San Juan Pueblo) to the north and San Ildefonso Pueblo to the south.

Within the Pueblo’s tribal code and court system, there is a codified juvenile justice code for both status and non-status offenses.<sup>83</sup> Moreover, there are juvenile court procedures in place for these types of cases.<sup>84</sup> In terms of detention services, the Pueblo contracts with New Mexico county jails, as well as the Southern Ute Tribe’s Detention Facility.<sup>85</sup>

### [Santa Clara Pueblo Contact Information](#)

Governor J. Michael Chavarria  
P.O. Box 580  
Española, NM 87532  
Tel: (505) 753-7330  
Fax: (505) 753-8988  
Lt. Gov. James Naranjo

Santa Clara Tribal Court  
Frank Demolli - Chief Judge  
Christine Aquino - Court Administrator  
P.O. Box 580  
Española, New Mexico 87562  
Tel: (505) 753-0411

---

<sup>83</sup> See Santa Clara Pueblo Tribal Court Handbook, University of New Mexico Tribal Law Journal, 13 (Fall 2013) available <http://lawschool.unm.edu/tlj/handbook/pdfs/santa-clara-2013.pdf>.

<sup>84</sup> *Id.* at 15.

<sup>85</sup> *Id.* at 16.

<b><u>Santa Clara Pueblo Population</u></b>	
Total Population	11,021

<b><u>Santa Clara Pueblo Population by Sex/Age</u></b>	
Male	5,317
Female	5,704
Under 18	2,742
18 & over	8,279
20 – 24	732
25 – 34	1,317
35 – 49	2,038
50 – 64	2,374
65 & over	1,526

<b><u>Santa Clara Pueblo Population by Race</u></b>	
White	7,596
African American	63
Asian	91
American Indian and Alaska Native	1,411
Native Hawaiian and Pacific Islander	3
Other	1,620
Identified by two or more	237

<sup>86</sup> U.S. Census Bureau, 2010 Census, 2010 Demographic Profile Data, Santa Clara Pueblo and Off-Reservation Trust Land, Select State “New Mexico” Select Areas Within “AIAN Areas” Select “Santa Clara Pueblo and Off-Reservation Trust Land” <http://www.census.gov/popfinder/> (last visited Jul. 11 2016).



## JEMEZ PUEBLO

---

The Jemez (HAY-mez) Pueblo is fifty-five miles northwest of Albuquerque. Among Pueblo members it is known as “Walatowa.” There are approximately 3,400 Jemez Tribal members, with about 58% of its members living in the Jemez Pueblo area.<sup>87</sup> Notably, the Pueblo of Jemez has a closed village policy, due in part to privacy concerns for tribal members and a lack of tourism facilities. Thus, the Jemez Pueblo is only open to the public on its Feast Days. However, the Pueblo now chooses to no longer allow these days to be publicized due to over-capacity issues.

Within the written Jemez tribal code, there is a codified juvenile justice section.<sup>88</sup> However, as of 2010, pursuant to the Jemez Law and Order Code, attorneys are not allowed to practice in its tribal court.<sup>89</sup> Moreover, the as of 2010, the Jemez Tribal Court did not have juvenile court procedures in place.<sup>90</sup> For Jemez juvenile tribal member detentions, the Pueblo has a formal agreement with the Bernalillo County Juvenile Detention Center.<sup>91</sup> Moreover, the Pueblo also has a Bureau of Indian Affairs contract place with Sandoval County for its detention facilities, as well as with the Regional Corrections Center in Albuquerque for correctional services.<sup>92</sup>

### [Jemez Pueblo Contact Information](#)

Jemez Tribal Court  
Cynthia T. Gachupin - Court Administrator  
Joyce Gachupin – Court Clerk  
P.O. Box 100  
Jemez Pueblo, NM 87024  
Tel: 575-834-7359  
[cyntg@jemezpuablo.org](mailto:cyntg@jemezpuablo.org)  
[jgachupin@jemezpuablo.org](mailto:jgachupin@jemezpuablo.org)

### 2010 Demographic Profile of Jemez Pueblo<sup>93</sup>

<b><u>Jemez Pueblo Population</u></b>	
Total Population	1,815

---

<sup>87</sup> See Welcome to the Jemez Pueblo, [jemezpuablo.org](http://jemezpuablo.org) (last visited Jul. 12, 2016).

<sup>88</sup> See Jemez Pueblo Tribal Court Handbook, University of New Mexico Tribal Law Journal, 11 (Spring 2010) available at <http://lawschool.unm.edu/tlj/handbook/pdfs/Jemez2010.pdf>.

<sup>89</sup> *Id.* at 6.

<sup>90</sup> *Id.* at 12.

<sup>91</sup> *Id.* at 13.

<sup>92</sup> *Id.*

<sup>93</sup> U.S. Census Bureau, 2010 Census, 2010 Demographic Profile Data, Jemez Pueblo and Off-Reservation Trust Land, Select State “New Mexico” Select Areas Within “AIAN Areas” Select “Jemez Pueblo and Off-Reservation Trust Land” <http://www.census.gov/popfinder/> (last visited Jul. 11, 2016).



### Jemez Pueblo Population by Sex/Age

Male	882
Female	933
Under 18	525
18 & over	1,290
20 – 24	148
25 – 34	247
35 – 49	354
50 – 64	301
65 & over	178

### Jemez Pueblo Population by Race

White	7
African American	1
Asian	0
American Indian and Alaska Native	1,789
Native Hawaiian and Pacific Islander	0
Other	10
Identified by two or more	8



## **TAOS PUEBLO**

Taos (TAH-os) Pueblo is the northernmost tribal pueblo in New Mexico. It is located north of Española, through the town of Taos. The Taos tribal land base is approximately 99,000 acres. It is a member of the Eight Northern Pueblos. Within its written tribal code, the Taos Pueblo has a juvenile justice code in place for both status and non-status offenses.<sup>94</sup> The Pueblo also has codified juvenile court procedures in place.<sup>95</sup> In terms of juvenile detentions, as of 2008, the Pueblo has a formal agreement in place with the Taos County Juvenile Detention Facility.<sup>96</sup> Moreover, the Taos Pueblo has a detention center operated by its tribal police department

<sup>94</sup> See Taos Pueblo Tribal Court Handbook, University of New Mexico Tribal Law Journal, 11 (Spring 2008) available at <http://lawschool.unm.edu/tlj/handbook/pdfs/Taos%20Pueblo%202008.pdf>.

<sup>95</sup> *Id.* at 12.

<sup>96</sup> *Id.* at 13.

with a capacity of eight detainees.<sup>97</sup>

### Taos Pueblo Contact Information

Pueblo of Taos Tribal Court  
Leona Romero - Court Administrator  
Paula Vigil - Court Administrator  
P.O. Box 1846  
Taos, NM 87571  
Tel: 505-751-0488  
tptribalcourts@taospueblo.com

Taos Pueblo Governor's Office  
PO Box 1846, Taos, NM 87571  
Tel: 505-758-9593  
governor@taospueblo.com

Taos Pueblo War Chief's Office  
Tel: 575-758-3883  
warchief@taospueblo.com

### 2010 Demographic Profile of Taos Pueblo<sup>98</sup>

<b><u>Taos Pueblo Population</u></b>	
Total Population	4,384

<b><u>Taos Pueblo Population by Sex/Age</u></b>	
Male	2,136
Female	2,248
Under 18	880
18 & over	3,504
20 – 24	234
25 – 34	446
35 – 49	888
50 – 64	978
65 & over	861

<b><u>Taos Pueblo Population by Race</u></b>	
White	2,022
African American	8
Asian	25
American Indian and Alaska Native	1,193
Native Hawaiian and Pacific Islander	2

<sup>97</sup> *Jails in Indian County*, *supra* note 1 at 11.

<sup>98</sup> U.S. Census Bureau, 2010 Census, 2010 Demographic Profile Data, Taos Pueblo and Off-Reservation Trust Land, Select State "New Mexico" Select Areas Within "AIAN Areas" Select "Taos Pueblo and Off-Reservation Trust Land" <http://www.census.gov/popfinder/> (last visited Jul. 11 2016).

Other	911
Identified by two or more	223



## **TESUQUE PUEBLO**

Tesuque (te-SOO-keh) Pueblo, roughly ten miles north of the city of Santa Fe. The name Tesuque is a Spanish variation of the Tewa name, “Te Tesugeh Oweengeh”, which means the "village of the narrow place of the cottonwood trees." It is a member of the Eight Northern Pueblos. It is one of the state’s smallest pueblos, with a population of roughly 800, but the Pueblo itself encompasses more than 17,000 acres of land. Little is known regarding the Pueblo’s tribal court and juvenile justice system.

### [Tesuque Pueblo Contact Information](#)

Pueblo of Tesuque - Governor's Office  
 Governor Fredrick Vigil  
 Route 42, Box 360-T  
 Santa Fe, NM 87506  
 Phone: (505) 955-7732  
 Fax: (505) 982-2331  
 Lt. Gov. James Duran

### 2010 Demographic Profile of Tesuque Pueblo<sup>99</sup>

<b><u>Tesuque Pueblo Population</u></b>	
Total Population	841

<b><u>Tesuque Pueblo Population by Sex/Age</u></b>	
Male	422
Female	419
Under 18	226
18 & over	615
20 – 24	63
25 – 34	116
35 – 49	159
50 – 64	178
65 & over	78

<sup>99</sup> U.S. Census Bureau, 2010 Census, 2010 Demographic Profile Data, Tesuque Pueblo and Off-Reservation Trust Land, Select State “New Mexico” Select Areas Within “AIAN Areas” Select “Tesuque Pueblo and Off-Reservation Trust Land” <http://www.census.gov/popfinder/> (last visited Jul. 11 2016).

<b><u>Tesuque Pueblo Population by Race</u></b>	
White	199
African American	1
Asian	3
American Indian and Alaska Native	346
Native Hawaiian and Pacific Islander	0
Other	279
Identified by two or more	13



## **PUEBLO OF ZIA**

The Zia (ZEE-ah) Pueblo is eighteen miles northwest of the city of Bernalillo, New Mexico and thirty-five miles northwest of Albuquerque. The Pueblo is situated in the steep mountains slopes and canyons of the Sierra Nacimiento Mountains. The Zia Pueblo has approximately 850 tribal members.<sup>100</sup>

As of 2010, the Zia Pueblo did not have a written Tribal Code, and in the alternative, the Zia tribal court system uses unwritten tribal traditional laws in its court proceedings.<sup>101</sup> The Zia tribal court has a judge, a court clerk, and a probation officer, and the appellate division of the Zia Court is the Zia Tribal Council.<sup>102</sup> Notably, the Pueblo disclosed in 2010 that it sometimes exercises jurisdiction over juvenile tribal members in state juvenile proceedings for off-reservation conduct in conjunction with New Mexico Children, Youth and Families Department.<sup>103</sup> Moreover, the Pueblo of Zia has a Healing to Wellness Court for both adults and juveniles on the Zia reservation. As of 2010, the Pueblo had a detention contract with Sandoval County and a formal agreement for correctional detentions with the Regional Correctional Center.<sup>104</sup>

### Zia Pueblo Contact Information

Zia Adult & Juvenile Healing to Wellness Court  
135 Capital Square Drive  
Zia Pueblo, NM 87053  
Phone: (505) 867-3304

Zia Pueblo Tribal Court  
Robert Medina - Judge  
Pablita C. Pino - Court Clerk  
135 Capital Square Drive  
Zia Pueblo, NM 87053  
Tel: (505) 867-3304  
rfmedina@ziapueblo.org

<sup>100</sup> See Zia Pueblo, [http://zia.com/home/zia\\_info.html](http://zia.com/home/zia_info.html) (last visited Jul. 12, 2016).

<sup>101</sup> See Zia Pueblo Tribal Court Handbook, University of New Mexico Tribal Law Journal, 3 (Spring 2010) available at <http://lawschool.unm.edu/tlj/handbook/pdfs/Zia2010.pdf>.

<sup>102</sup> *Id.* at 4.

<sup>103</sup> *Id.* at 9.

<sup>104</sup> *Id.* at 14.

2010 Demographic Profile of Zia Pueblo<sup>105</sup>

<b><u>Zia Pueblo Population</u></b>	
Total Population	737

**Zia Pueblo Population by Sex/Age**

Male	363
Female	374
Under 18	243
18 & over	494
20 – 24	63
25 – 34	101
35 – 49	129
50 – 64	113
65 & over	64

**Zia Pueblo Population by Race**

White	1
African American	0
Asian	0
American Indian and Alaska Native	733
Native Hawaiian and Pacific Islander	0
Other	0
Identified by two or more	3

<sup>105</sup> U.S. Census Bureau, 2010 Census, 2010 Demographic Profile Data, Zia Pueblo and Off-Reservation Trust Land, Select State “New Mexico” Select Areas Within “AIAN Areas” Select “Zia Pueblo and Off-Reservation Trust Land” <http://www.census.gov/popfinder/> (last visited Jul. 11, 2016).



## ZUNI PUEBLO

---

Zuni (ZOO-nee) Pueblo, the largest of the nineteen New Mexico pueblos, is located thirty-two miles southwest of Gallup and 150 miles west of Albuquerque, in the west central part of New Mexico. It is the most isolated from the other tribal pueblos as it is the furthestmost western pueblo. In terms of size, the Zuni Pueblo encompasses about 450,000 acres.

Within the Zuni Tribal code, there is a Children's Code, which can be viewed [here](#). Within the Zuni Children Code, there are status offenses, which include: absent from school; disobeying parents; and leaving home.<sup>106</sup> There are also juvenile non-status offenses codified within the Zuni Children's Code.<sup>107</sup> Moreover, there are also regulations in place for juvenile commitments.<sup>108</sup> The Tribe also has codified juvenile court procedures.<sup>109</sup> The Zuni Pueblo also has a Healing to Wellness Court. Moreover, the Zuni Tribe operates both an adult and juvenile detention facilities.<sup>110</sup> The adult facility can house up to twenty-eight adults, while the juvenile facility has a maximum capacity of fourteen. Notably, the state of New Mexico provides both teachers and the education materials to the detained juveniles in the Zuni juvenile detention facility.<sup>111</sup>

### [Zuni Pueblo Contact Information](#)

Zuni Pueblo  
PO Box 339  
Zuni, NM 87327  
Tel: 505-782-4481 (Governor's Office)

Pueblo of Zuni - Tribal Court  
Albert E. Banteah - Chief Tribal Judge  
Address P.O. Box 339-1203B  
Zuni, NM 87327  
Tel: 505-782-7042  
Fax 505-782-7219

Arlene Sanchez - Court Administrator  
Tel: (505) 782-7123

Rhoda Allapowa - Chief Court Clerk  
Tel: (505) 782-7042

Alva Romancito - Juvenile Court Clerk  
Tel: (505) 782-7127

Donovan Tsadiasi - Probation Officer  
Tel: (505) 782-7041

Marcella Lalio - Juvenile Probation Officer  
Tel: (505) 782-7126

Zuni Juvenile Detention Center  
Tyler Lastiyano  
Tel: 505-782-2917  
[tlasti@ashiwi.org](mailto:tlasti@ashiwi.org)

---

<sup>106</sup> See Zuni Pueblo Tribal Court Handbook, University of New Mexico Tribal Law Journal, 11 (Spring 2008) available at [http://lawschool.unm.edu/tlj/handbook/pdfs/Zuni%20Pueblo\\_2008.pdf](http://lawschool.unm.edu/tlj/handbook/pdfs/Zuni%20Pueblo_2008.pdf).

<sup>107</sup> *Id.*

<sup>108</sup> *Id.* at 12.

<sup>109</sup> *Id.* at 13.

<sup>110</sup> *Jails in Indian County*, *supra* note 1 at 11.

<sup>111</sup> OJS Juvenile Educational Programs, *supra* note 14 at 2.



2010 Demographic Profile of Zuni Pueblo<sup>112</sup>

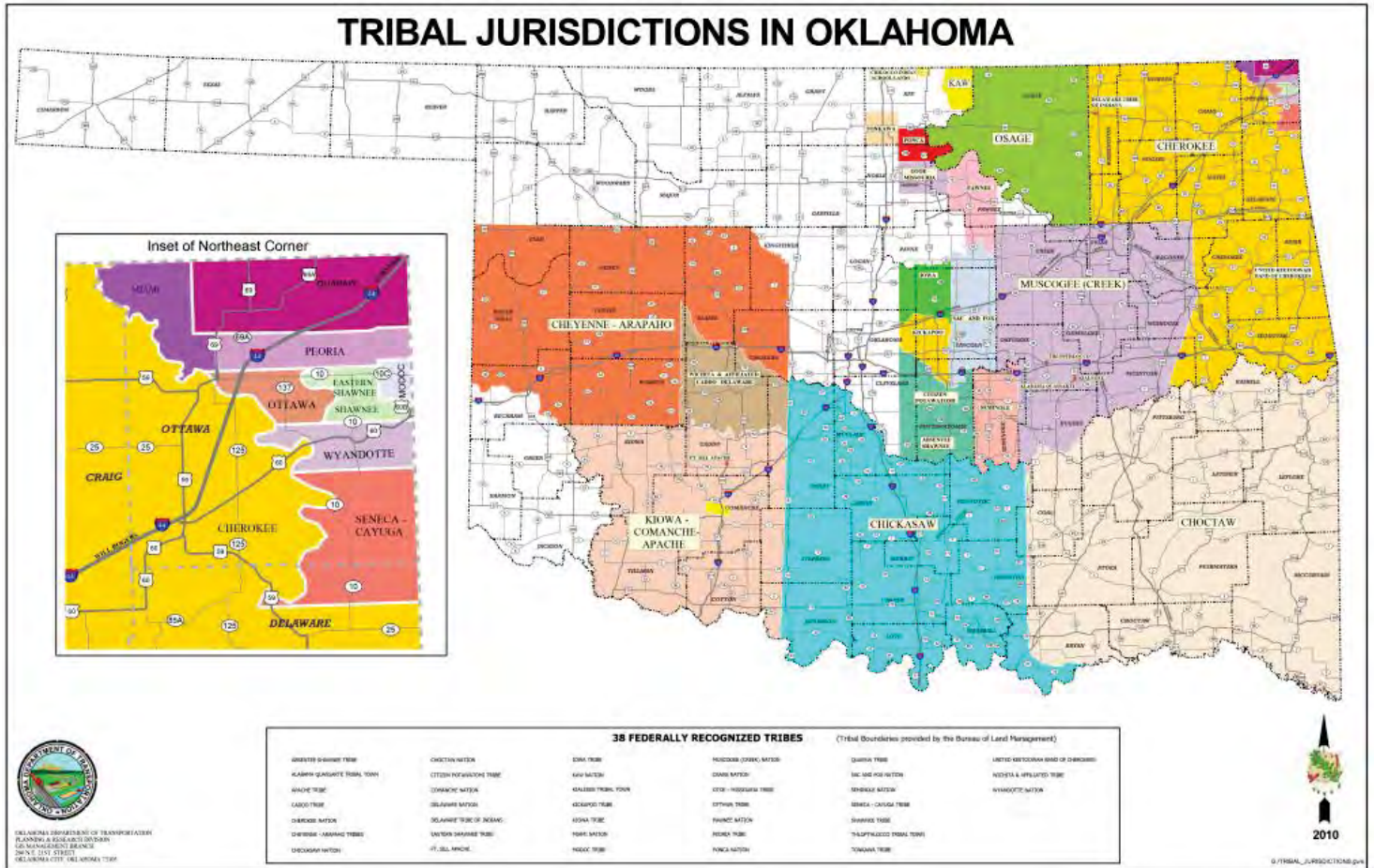
<b><u>Zuni Pueblo Population</u></b>	
Total Population	7,891

<b><u>Zuni Pueblo Population by Sex/Age</u></b>	
Male	3,848
Female	4,043
Under 18	2,378
18 & over	5,513
20 – 24	635
25 – 34	1,013
35 – 49	1,724
50 – 64	1,255
65 & over	569

<b><u>Zuni Pueblo Population by Race</u></b>	
White	186
African American	15
Asian	29
American Indian and Alaska Native	7,551
Native Hawaiian and Pacific Islander	1
Other	27
Identified by two or more	82

<sup>112</sup> U.S. Census Bureau, 2010 Census, 2010 Demographic Profile Data, Zuni Pueblo and Off-Reservation Trust Land, Select State “New Mexico” Select Areas Within “AIAN Areas” Select “Zuni Pueblo and Off-Reservation Trust Land” <http://www.census.gov/popfinder/> (last visited Jul. 11, 2016).

# OKLAHOMA TRIBAL MAPPING PROJECT



The state of Oklahoma contains thirty-nine federally-recognized Indian tribes and respective tribal governments within its boundaries. Oklahoma was the original “Indian country,” as it was the territory where the United States federal government removed East Coast Indians tribes during the Removal Period of the nineteenth century. With the exception of the Osage Tribe, the other thirty-eight tribes of Oklahoma do not have trial reservations per se, as tribes do in other places across the country, these tribal governments are nonetheless able to exercise tribal jurisdiction on a county-level basis.

According to the University of Oklahoma, the state’s tribes utilize two different types of court systems: Tribal Courts and CFR Courts, also known as Court of Indian Offenses or Courts of Federal Regulations.<sup>1</sup> Tribal courts are operated by the tribes themselves, who may select what types of cases it may hear. Other tribes of Oklahoma have chosen to rely upon the CFR courts, which were established by the Bureau of Indian Affairs (“BIA”).

Overall, there are twelve Oklahoma tribes within a 90-mile radius of Tulsa, Oklahoma. These tribes are: Cherokee Nation, Creek Nation, Delaware Tribe of Indians, Iowa Tribe, Kaw Nation, Loyal Shawnee, Sac and Fox Nation, Osage Nation, Otoe-Missouri, Ottawa Nation, Pawnee Peoria, and the Wyandotte Tribe.

## CHEROKEE NATION



<sup>1</sup> See *Introduction to Tribal Courts*, Oklahoma Indian Legal Services, <http://thorpe.ou.edu/OILS/court.html> (last visited Jul. 26, 2016).

Headquartered in Tahlequah, Oklahoma, the Cherokee Nation has a tribal jurisdictional area spanning fourteen counties in the northeastern corner of Oklahoma. These are Adair, Cherokee, Craig, Delaware, Mayes, McIntosh, Muskogee, Nowata, Ottawa, Rogers, Sequoyah, Tulsa, Wagoner, and Washington Counties. Currently, over 299,862 people are enrolled in the Cherokee Nation, with 189,228 living within the state of Oklahoma.

The tribal land base consists of 124,000 acres spanning fourteen counties. Although the land base does not have the status of a reservation, the Cherokee Nation is considered a jurisdictional service area. Cherokee Nation has two tribal courts, the District Court and the Judicial Appeals Tribunal (JAT). The Cherokee Nation Marshal Service polices the tribe and its members.

## **Tribal Court Contact Information**

### **Cherokee Nation District Court**

Court Clerk: Lisa Fields

100 S. Muskogee Ave.

P.O. Box 1097

Tahlequah, OK 74465-1097

(918)-458-9572

Kendall Bird

Supreme Court Clerk

(918) 458-9440

## **Juvenile Programs**

### *Cherokee Bright Futures Truancy Prevention Program*

P.O. Box 948

Tahlequah OK 74465

Phone: 918-457-9609 or 918 822-2807

- Bright Futures was developed to assist with reducing truancy and dropout rates. The pilot program is being developed in Adair County. It serves children from Kindergarten through the 12th grade. It is operated through a partnership with the Adair County school districts.
- Program staff work with the children and their families through home visits, assessing obstacles to regular school attendance and working in conjunction with the family to get children back in school. Many times participation in this program is voluntary and is offered as an alternative to an appearance in Adair County District Court.

### *Healing To Wellness Court*

P.O. Box 948

Tahlequah OK 74465

Phone 918-207-4908 or 918-207-4959

- This program, through a system of services, serves Native American youth between the ages of 12 to 17 who are affected by alcohol or drugs. It provides judicial treatment, support and services that meet the needs of these young people as well as their families.
- Whether young people participate through court mandate or voluntarily, Healing to Wellness Court is an opportunity to address the issues that have resulted in their appearance in court.
- This program is designed from a Native American perspective; culture and tradition are components of the treatment process. It helps to empower participants to deal with their substance and/or alcohol issues through counseling, accountability and supervision. The program requires a commitment from the participants to be honest, actively participate and to cease the use of all drugs and alcohol.

- The Healing to Wellness Court consists of four phases of treatment lasting from twelve to eighteen months and is equivalent to existing juvenile drug court models. It serves young people in Adair, Cherokee and Delaware Counties.

*Juvenile First Time Offender Program*

- The goal of the juvenile first time offender program is to redirect the paths of young people facing first time misdemeanor charges by offering alternative means of dealing with the violation. It requires children ages 10-17 to participate in a minimum 14 hour course, including community service. This program is currently offered in Cherokee County.

*The Jack Brown Center*

Vickie Goodnight  
Office Manager/Intake Coordinator  
1429 Jack Brown Lane  
Tahlequah, OK 74464  
Tel: 918-453-5519  
jack-brown-center@cherokee.org

- The Jack Brown Center is a twenty-bed co-educational facility providing treatment in a residential setting for chemically-dependent Indian adolescents. The program is intended to serve clients from 13 to 18 years of age who are experiencing serious substance abuse problems.
- This center is not just limited to Cherokee tribal members, but appears to accept Native American youth affiliated with other tribal nations as well.

*Cherokee Nation Youth Services*

John A. Ketcher Youth Services Center  
21834 S. Jules Valdez Road  
PO Box 948  
Tahlequah, OK 74465  
918-458-4440



## **MUSCOGEE CREEK NATION**

The Muscogee (Creek) Nation is headquartered in Okmulgee, Oklahoma. In 2013, there were 77,061 people enrolled in the Muscogee Creek Nation. Of these, 55,591 lived within the state of Oklahoma. The Muscogee Nation has jurisdiction over tribal members in Creek, Hughes, Okfuskee, Okmulgee, McIntosh, Muskogee, Tulsa, and Wagoner counties in Oklahoma. The Tribe's headquarters is about 38 miles from Tulsa.

Notably, Title 27 of the Tribe's Code outlines juvenile procedures. This code can be found via this link:  
<http://www.creeksupremecourt.com/images/pdf/title27.pdf>.

**MUSCOGEE (CREEK) NATION DISTRICT COURT**

P.O. Box 652  
Okmulgee, Oklahoma 74447-6052

918-758-1412  
FAX: 918/758-1413  
Court Clerk: Nancy Jukich

Department of Justice  
Office of the Attorney General  
Muscogee (Creek) Nation  
Legal Services Citizens

1008 E. Eufaula|PO Box 580  
Okmulgee, OK 7444



## **DELAWARE TRIBE OF INDIANS**

---

The Delaware Tribe of Indians, sometimes called the Eastern Delaware, based in Bartlesville, Oklahoma, and apparently have no tribal jurisdictional area. Their housing program covers Washington, Nowata, Rogers, Craig and Part of Tulsa Counties. The tribal membership population is roughly 10,500 members. It is unknown whether the Tribe has a juvenile code, however, it does operate a tribal court with Dan Mason as the current Chief Judge. The tribal headquarters is roughly 45 miles from Tulsa.

### **DELAWARE TRIBE OF EASTERN OKLAHOMA**

108 S. Seneca  
Bartlesville, Oklahoma 74003  
918/336-5272  
FAX: 918/336-5513  
Court Clerk: Marilyn Cole

### **Oklahoma Headquarters**

5100 Tuxedo Blvd  
Bartlesville, OK 74006  
918-337-6590  
Tribe@delwaretribe.org

## **IOWA TRIBE OF OKLAHOMA**

---



Located in Perkins, Oklahoma, the Iowa Tribe has approximately 800 members enrolled within the tribe and a jurisdictional area covering all or parts of Payne, Oklahoma, Lincoln, and Logan counties. There is a tribally operated police department. The tribal headquarters is roughly 65-70 miles from Tulsa.

The Iowa Tribe of Oklahoma first established and operated its tribal court system through an inter-tribal agreement with a neighboring tribe in 1987. In 1992, the Iowas assumed complete operation of its tribal court and physically relocated the court from the inter-tribal location to the Iowa Tribal Headquarters in Perkins, Oklahoma.

The Iowa tribal court is a court of general jurisdiction and administers its law and order in civil, criminal and juvenile matters. The court staff consists of a district court judge, public defender and prosecutor. The Iowa Supreme Court is made up of two justices and one Chief Justice. The Tribe's judicial authority is based upon its Constitution, its Tribal Law and Order Code. [Title 14](#) of the tribal Code is the tribe's Juvenile Procedures. Moreover, the Tribe has a specific Juvenile Division within its District Court.

### **Tribal Administration**

335588 E 750 Rd / Tribal Complex  
Perkins, Oklahoma 74059

(405) 547-2402



**Public Defender**Email: [PublicDefender@iowanation.org](mailto:PublicDefender@iowanation.org)**Attorney General**Email: [AttorneyGeneral@iowanation.org](mailto:AttorneyGeneral@iowanation.org)**Court Administrator/Clerk, Patricia Roe**Email: [proeCA@iowanation.org](mailto:proeCA@iowanation.org)

## **KAW NATION**

---

The Kaw Nation's headquarters is in Kaw City, Oklahoma, and the tribal jurisdictional area is within Kay County, Oklahoma. The elected chairwoman is Elaine D. Huch, currently serving a four-year term. Of the 3,376 enrolled tribal members, roughly 1,400 members live within the state of Oklahoma. The Kaw Nation's court system was established in 1991. Before that time, all matters were heard in the federal CFR courts. The Kaw Nation District Court has a juvenile code and docket as well as the capacity to issue Juvenile Summons and Juvenile Pick Up Orders. The Tribe's Supreme Court consists of three justices, and such inferior courts as may be established by tribal law. The tribal headquarters is located roughly 85-90 miles from Tulsa.

**The Kaw Nation Court System**

698 Grandview Drive  
Kaw City, Oklahoma

**KAW NATION DISTRICT COURT**

Drawer 50  
Kaw City, Oklahoma 74641  
405/269-2552  
FAX: 405/269-2301  
Court Clerk: Lila Tah

**Kaw Attorney General**

KLINT A. COWAN  
Oklahoma City Office  
Chase Tower  
100 N. Broadway, Suite 1700  
Oklahoma City, OK 73102-9211  
T (405) 232-0621  
F (405) 232-9659  
[KCowan@FellersSnider.com](mailto:KCowan@FellersSnider.com)

## **LOYAL SHAWNEE**

---



The headquarters of the Shawnee Tribe is Miami, Oklahoma. Currently, there are 2,226 enrolled Shawnee tribal members, with 1,070 of those members living within the state of Oklahoma. It is unknown whether the Tribe



has a juvenile court or juvenile court proceedings. The tribal headquarters is located approximately 75 miles from Tulsa.

**The Shawnee Tribe**

P.O. Box 189 / 29 S Hwy 69A  
Miami OK 74355

**Tribal Administrator**

Jodi Hayes  
ShawneeTribe@ShawneeTribe.com

**LOYAL SHAWNEE TRIBE OF OKLAHOMA**

P.O. Box 893 (CRF COURT)  
Tahlequah, Oklahoma 74465  
918/253-4219  
FAX: 918/456-6485



---

## OSAGE NATION

The Osage tribal government is headquartered in Pawhuska, Oklahoma and has jurisdiction in Osage County, Oklahoma. The Osage Nation has 13,307 enrolled tribal members, with 6,747 living within the state of Oklahoma. The tribal headquarters is roughly 55 miles from Tulsa. Notably, the tribe has a sex offender registry. The highest tribal court is the Osage Supreme Court. The Osage Supreme Court has a Chief Justice, currently Meredith Drent. There is also a lower Trial Court and more inferior courts as allowed by the tribal constitution. The Tribe operates a Treatment Alternative to Street Crimes program for its tribal youth and adults. TASC provides quality, professional, ethical substance abuse prevention, and outpatient treatment services. TASC's target population is individuals and communities in Osage County that are affected by the use/abuse of alcohol and other drugs.

**OSAGE NATION DISTRICT COURT**

627 Grandview  
Pawhuska, OK 74056  
918/287-2496

**Osage Attorney General's Office**

1071 Grandview Lane  
Pawhuska, OK 74056  
918-287-5514

**Osage Supreme Court**

1333 Grandview  
Pawhuska OK, 74056  
918-287-5400

**Treatment Alternatives to Street Crimes (TASC)**

606 Kihekah  
Pawhuska, OK 74056  
918-287-5466  
Fax: 918-287-5413



---

## OTTAWA TRIBE

The headquarters of the Ottawa Tribe of Oklahoma is Miami, Oklahoma. Their tribal jurisdictional area is in Ottawa County. The Tribe has approximately 2,500 enrolled tribal members, while 737 of those members living within the state of Oklahoma. Given the small size of the Tribe, it does not have its own tribal court. The tribal headquarters is located roughly 89 miles from Tulsa.

**Ottawa Tribe of Oklahoma**

13 S. 69 A  
P.O. Box 110  
Miami, OK 74354

**Phone:** 918-540-1536

**Fax:** 918-542-3214

**Email:** [adawe.oto@gmail.com](mailto:adawe.oto@gmail.com)

**OTTAWA TRIBE OF OKLAHOMA COURT  
OF INDIAN OFFENSES**

Bureau of Indian Affairs Miami Office  
P.O. Box 391  
Miami, OK 74355  
918/542-6021  
FAX: 918/542-7603  
Court Clerk: Penny Sexton



---

**OTOE-MISSOURIA**

The Otoe-Missouria Tribe of Indians is headquartered in Red Rock, Oklahoma, and their tribal jurisdictional area is in Noble County, Oklahoma and Kay County, Oklahoma. There are 3,089 enrolled Otoe-Missouria tribal members with the majority living within the state of Oklahoma. The Tribe does not have its own tribal court system, and uses the CFR Court of Indian Offenses for the Otoe-Missouria Tribe. Court is convened twice a month in the Otoe-Missouria Police & Tribal Courts Building. This CRF court has the capacity to issue juvenile pick up orders and issue juvenile summons, as well as a summons to appear for tribal juveniles. Notably, the Tribe has its own sex offender registry. The tribal headquarters is located approximately 80 miles from Tulsa.

**OTOE-MISSOURIA TRIBE OF OKLAHOMA  
TRIBAL COURT**

Route 1, Box 62  
Red Rock, Oklahoma 74651  
404/723-4426  
FAX: 405: 405/723-4579  
Court Clerk: Timmi Huber Howe

Court of Indian Offenses for the Southern Plains  
PO BOX 368  
Anadarko, OK 73005

**Deputy Court Clerk Angela Anderson**

Email: [Angela.Anderson@bia.gov](mailto:Angela.Anderson@bia.gov)  
Phone: 405-247-8508  
Fax: 405-247-7240  
Work Schedule: 7 am-4:30 pm, Monday-Friday  
(off-duty every other Wednesday)  
Duty: Criminal, Juvenile and Child Support Cases

---

**PAWNEE NATION**

The Pawnee Nation tribal headquarters is in Pawnee, Oklahoma and their tribal jurisdictional area is in parts of Noble, Payne, and Pawnee counties. There are approximately 3,200 enrolled Pawnee tribal members and nearly all reside in Oklahoma. Notably, the Pawnee Business Council is the supreme governing body of the Pawnee Tribe of Oklahoma. The Pawnee Nation Police Department currently operates with one Chief of Police and four patrol officers. The Pawnee Nation District Court implements court services for the judicial needs and administration of justice regarding criminal, civil, and juvenile matters; for members of the Pawnee Nation and other individuals that are subject to the jurisdiction of the Pawnee Nation of Oklahoma. The tribal headquarters is located approximately 55 miles from Tulsa.

## **Pawnee Nation Tribal Headquarters**

881 Little Dee Drive  
P.O. Box 470  
Pawnee, OK 74058  
918-762-3621

### **David Kanuho**

Director, Chief of Police  
(918) 762-3013  
[dkanuho@pawneenation.org](mailto:dkanuho@pawneenation.org)  
Pawnee Nation of Oklahoma  
1200 Heritage Circle  
P.O. Box 470  
Pawnee, OK 74058

## **PAWNEE TRIBE OF OKLAHOMA DISTRICT COURT**

P. O. Box 28  
700 Agency Road, Building #33  
Pawnee, OK 74058  
[skanuho@pawneenation.org](mailto:skanuho@pawneenation.org)  
Office: (918) 762-3011  
Fax: (918) 762-3230  
Chief Judge: Dianne Barker Harrold  
Deputy Court Clerk: Brandi Johnson  
Court Clerk: Suzie Kanuho



## **PEORIA TRIBE**

---

The Peoria Tribe of Oklahoma is headquartered in Miami, Oklahoma, and their tribal jurisdictional area is in Ottawa County. Of the 2,925 enrolled tribal members, but only 777 live within the state of Oklahoma. Notably, the Tribe's CFR has the capacity to handle juvenile petitions. The tribal headquarters is located roughly 90 miles from Tulsa.

### **PEORIA TRIBE OF OKLAHOMA COURT OF INDIAN OFFENSES**

Bureau of Indian Affairs Miami Office  
P.O. Box 391  
Miami, Oklahoma 74355  
918/542-6021  
FAX: 918/542-7603  
Court Clerk: Penny Sexton



## **WYANDOTTE TRIBE**

---

The headquarters of the federally recognized Wyandotte Nation is in Wyandotte, Oklahoma, and their tribal jurisdictional area is in Ottawa County, Oklahoma. The Tribe operates a ten-man police department. Of the 4,957 enrolled Wyandotte tribal members, roughly 1,200 members live within the state of Oklahoma. The tribal headquarters is approximately 90 miles from Tulsa. Notably, the Tribe's CFR has the capacity to handle juvenile petitions, and juvenile pick up orders.

## WYANDOTTE TRIBE OF OKLAHOMA COURT OF INDIAN OFFENSES

Bureau of Indian Affairs Miami Office

P.O. Box 391

Miami, Oklahoma 74355

918/542-6021

FAX: 918/542-7603

Court Clerk: Penny Sexton



## **SAC AND FOX NATION**

---

The Sac and Fox Nation is headquartered in Stroud, Oklahoma, and their tribal jurisdictional area covers Lincoln, Payne, and Pottawatomie Counties. Their Principal Chief is Kay Wallace Rhoads. Five elected officials, each elected for a four-year term, govern the tribe. Elections are held in odd-numbered years in August. The Tribe has approximately 3,800 enrolled tribal members, with 2,550 living in the state of Oklahoma. The tribal headquarters is located about 30 miles from Tulsa.

The Tribe has codified [Juvenile Procedure](#) provisions within its tribal code. The Sac and Fox Tribal Court procedure is set by the Sac and Fox Code of Laws, which provides for two tribal courts: the lower or District Court and the upper or Supreme Court.

Notably, the Tribe has the Sac and Fox Nation Juvenile Department, established to serve tribal juveniles who come before the tribal court. This department includes the operation of the 50,000 square foot Juvenile Detention Center, located on twenty acres east of the Nation's Headquarters. Juveniles are detained at the Center until they return to court or to placement. At the Center, the juveniles attend school in an alternative setting as well as receive substance abuse counseling, if needed. The Juvenile Detention Center employs approximately 25 people.

The facility includes a six bed intake unit, two six bed secure units, two twelve bed units with mezzanine floors and one twenty-four bed unit with a mezzanine floor. Overall, it is a sixty-six bed facility. It has a kitchen, a central dining area, a full gym, a library, classrooms, medical area and two conference rooms, a training room, and numerous offices. Notably, the outside courtyard has two talking circles and a full basketball court. There is also a "spiritual courtyard." The entire facility was built with the Sac and Fox Nation's culture in mind.

### **Sac and Fox Nation Juvenile Facility**

Gene Carroll, Director

[gene.carroll@sacandfoxnation-nsn.gov](mailto:gene.carroll@sacandfoxnation-nsn.gov)

356265 E. 926 Rd.

Stroud, OK 74079

Phone: (918) 968-4279

Fax: (918) 968-9230

### **SAC & FOX NATION DISTRICT COURT**

Sac & Fox Reservation Tribal Courthouse

Route 2, Box 246

Stroud, Oklahoma 74079

918/968-2031

FAX: 918/968-3781

Court Clerk: Jeannie Pound